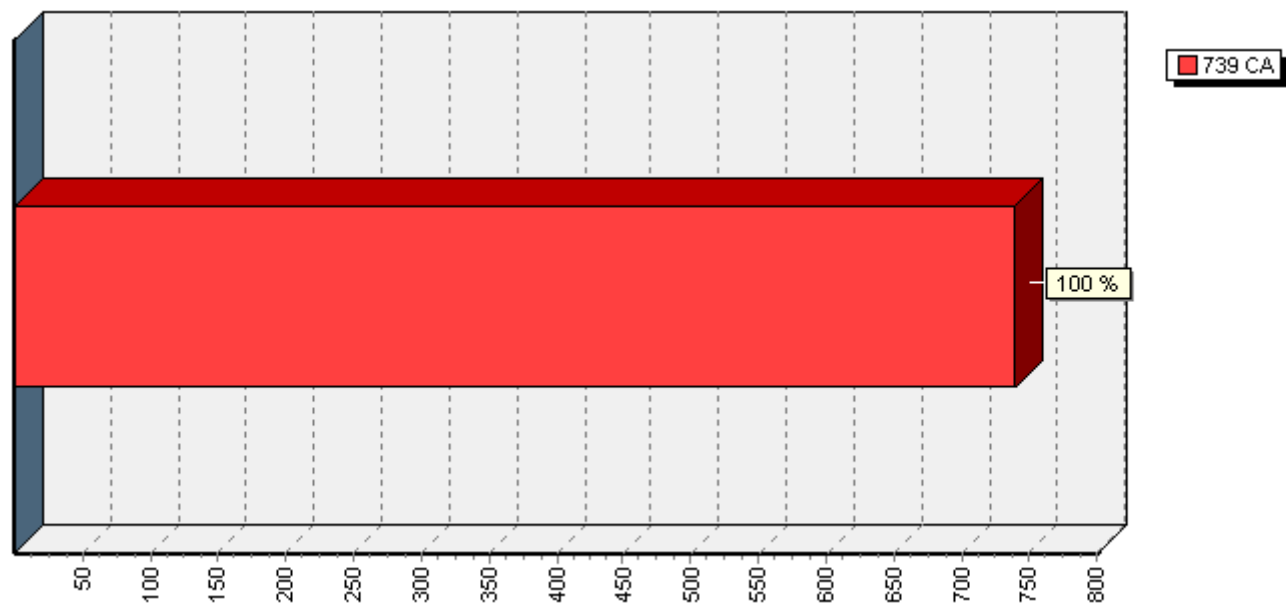


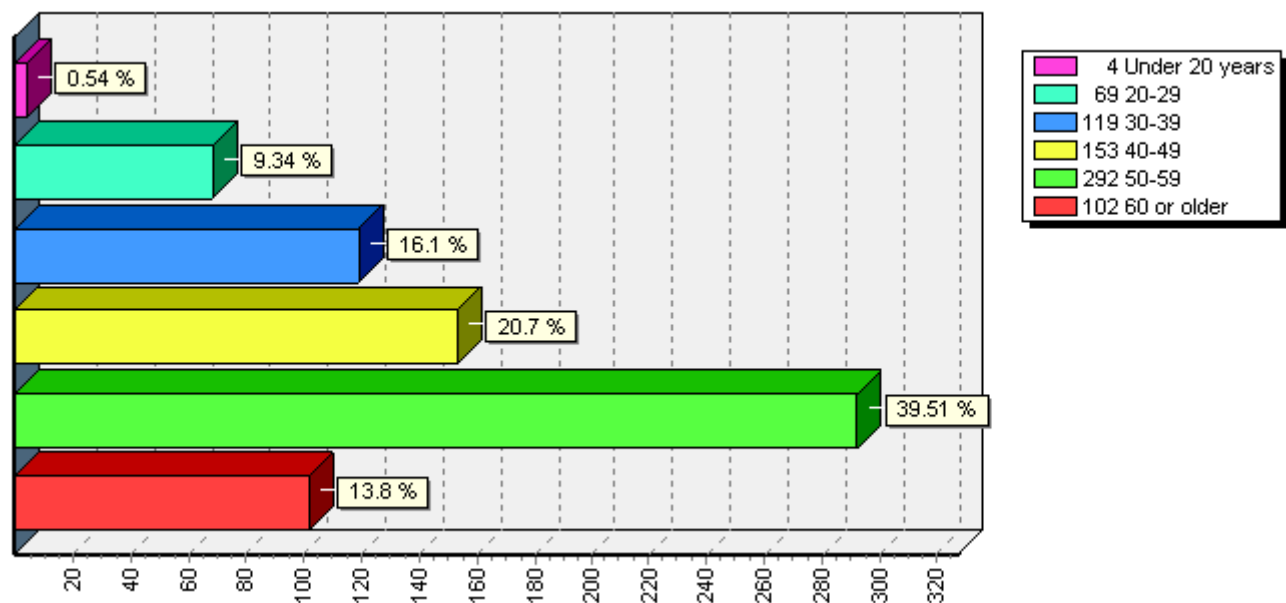
# Bar Graphs - OVERALL

## IP1 - CA Library Training Needs

[1] In which state do you reside?\*



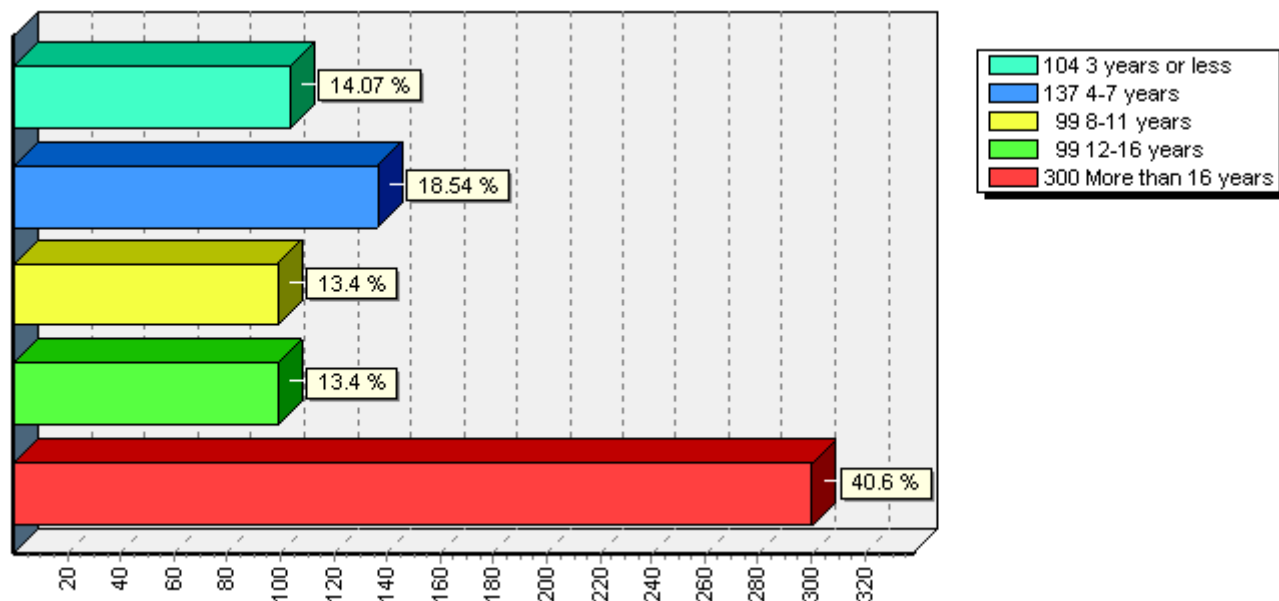
[2] What is your age range?



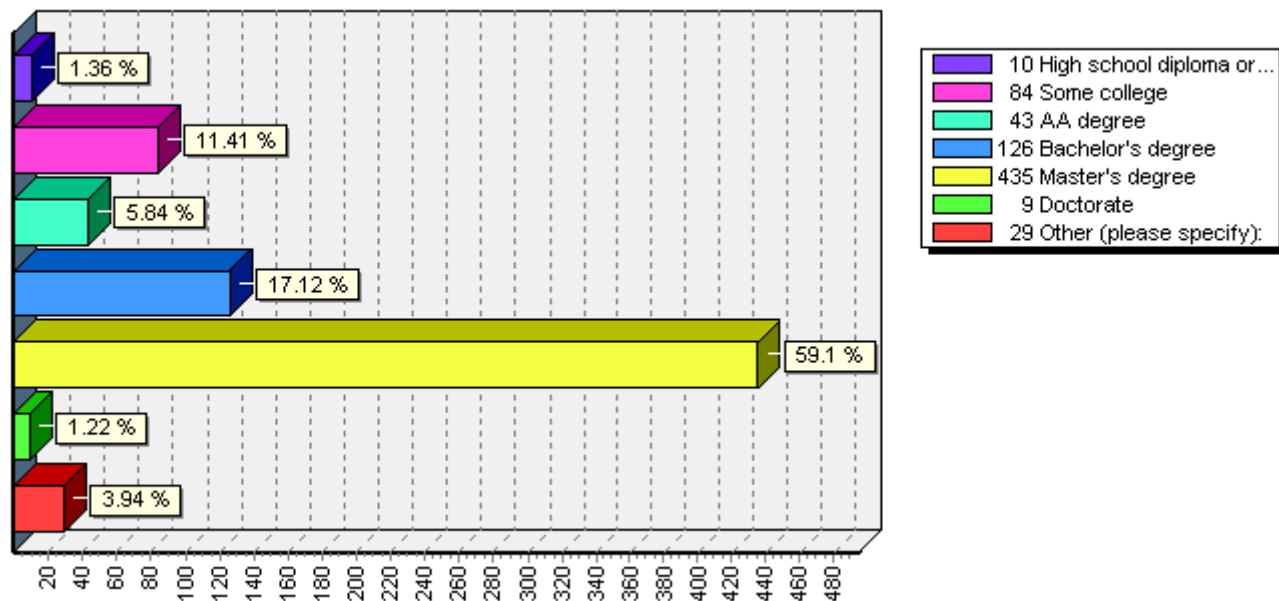
# Bar Graphs - OVERALL

## IP1 - CA Library Training Needs

[3] How many years have you worked in a library?



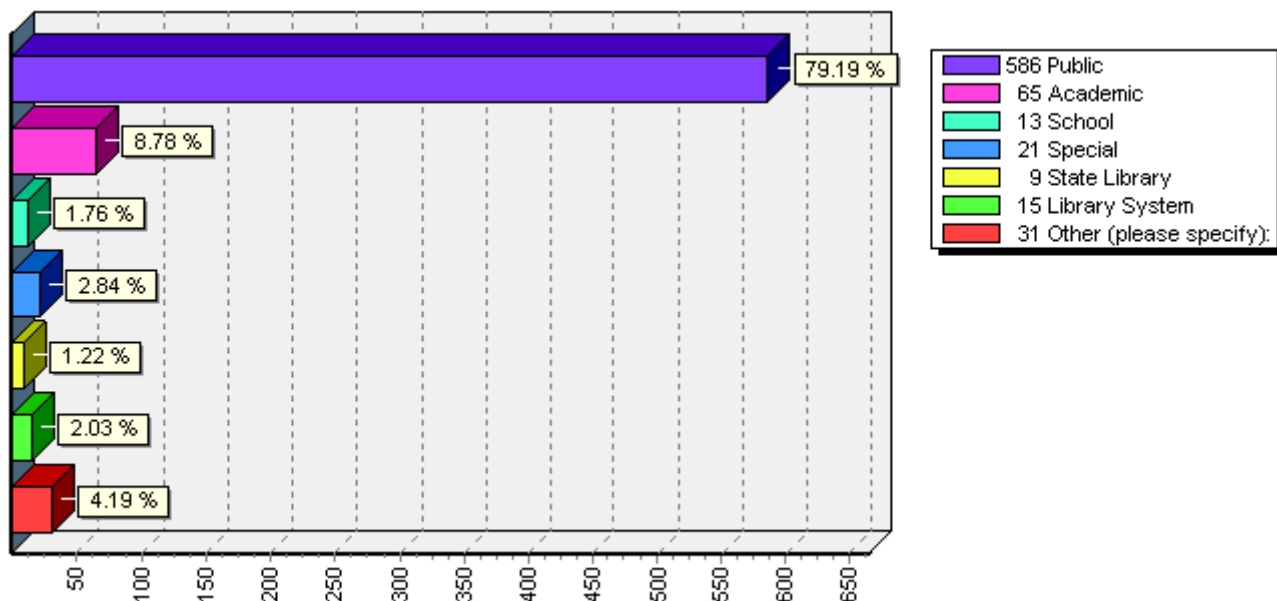
[4] What is the highest level of education you have completed?



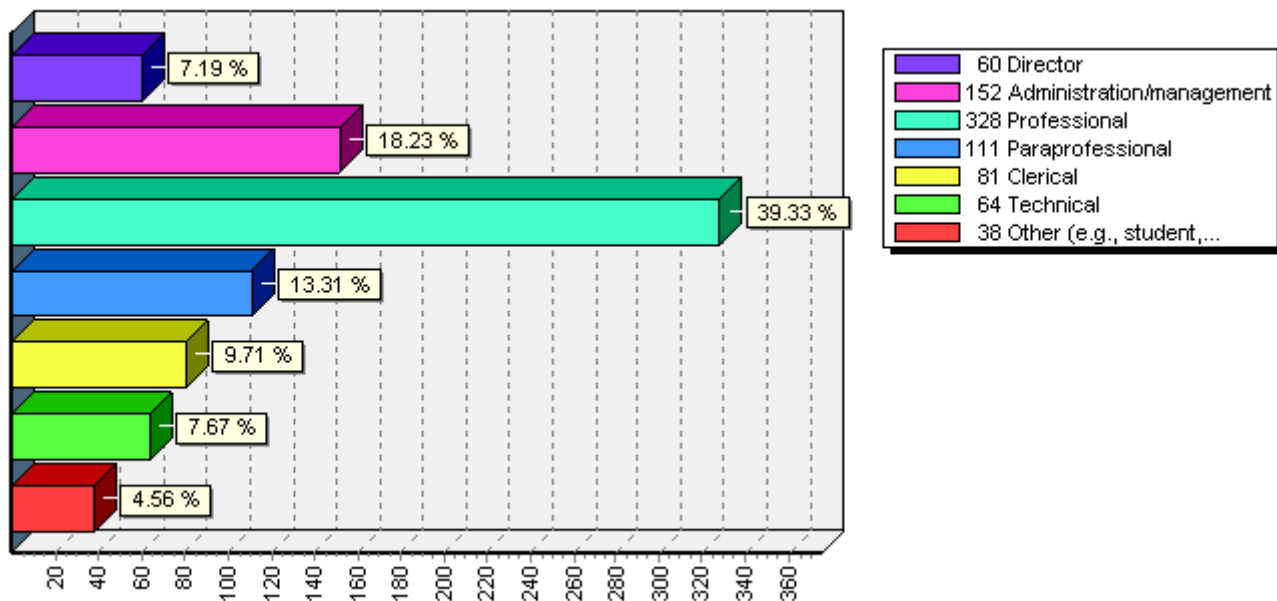
# Bar Graphs - OVERALL

## IP1 - CA Library Training Needs

[6] I work in the following type of library:\*



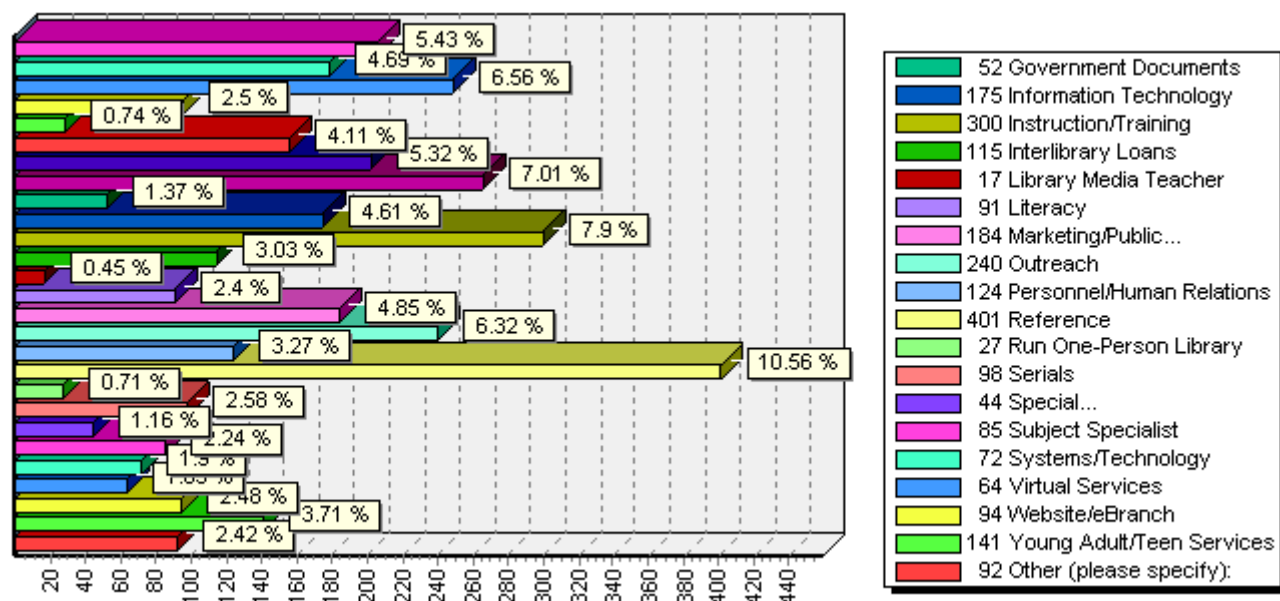
[7] My position is: (May check more than one if applicable)\*



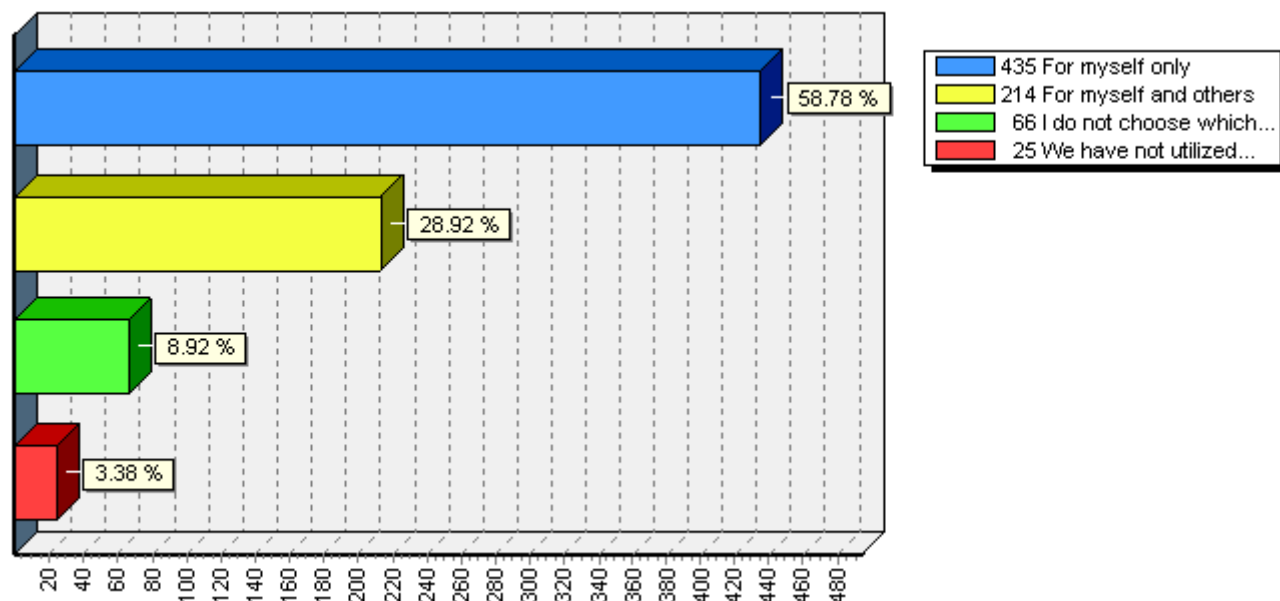
# Bar Graphs - OVERALL

## IP1 - CA Library Training Needs

[8] My work assignments include: (Check all that apply)\*



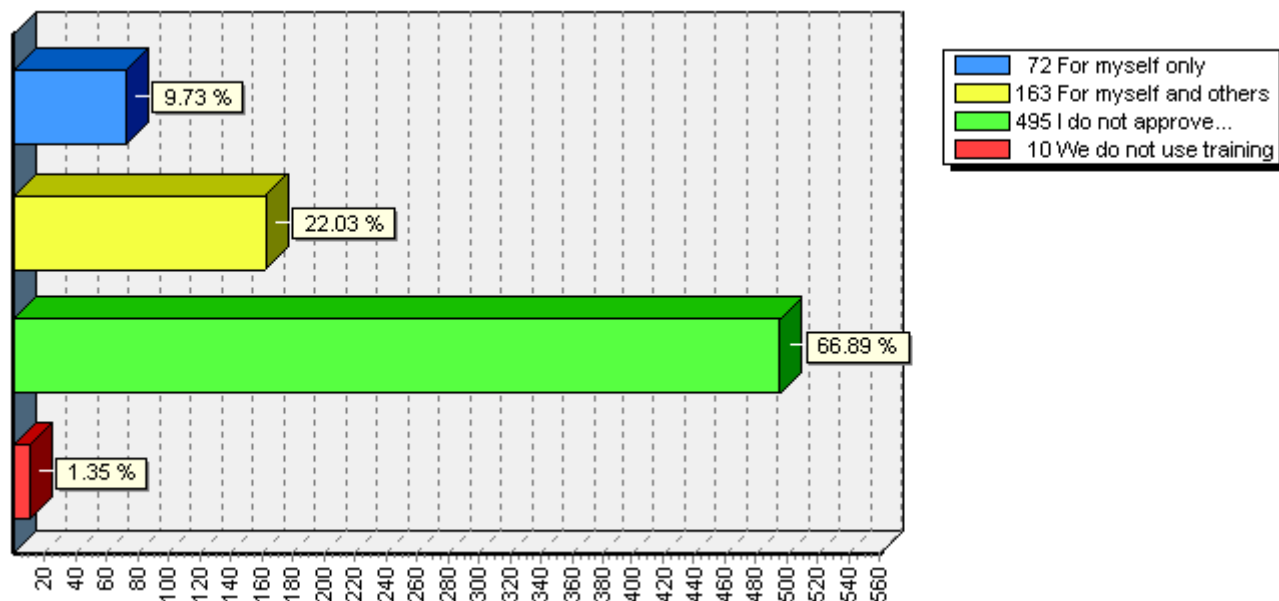
[9] I choose which Infopeople courses to take:\*



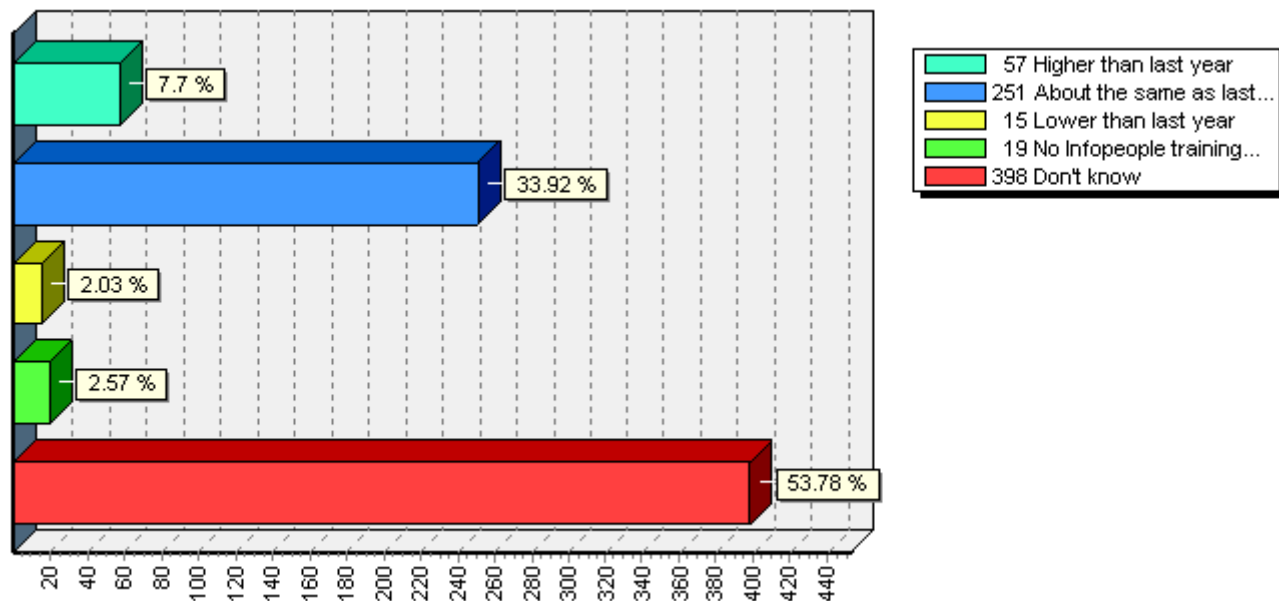
# Bar Graphs - OVERALL

## IP1 - CA Library Training Needs

[10] Within existing budgetary guidelines, I approve expenditures on Infopeople training:\*



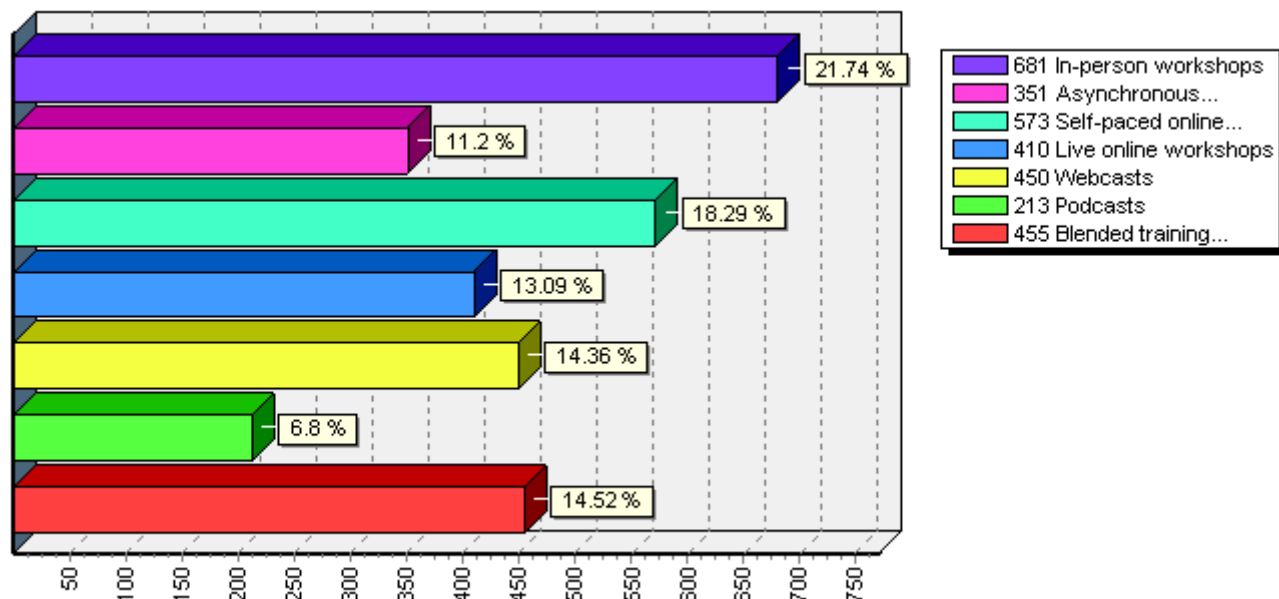
[11] My budget for Infopeople training for the coming year is likely to be:\*



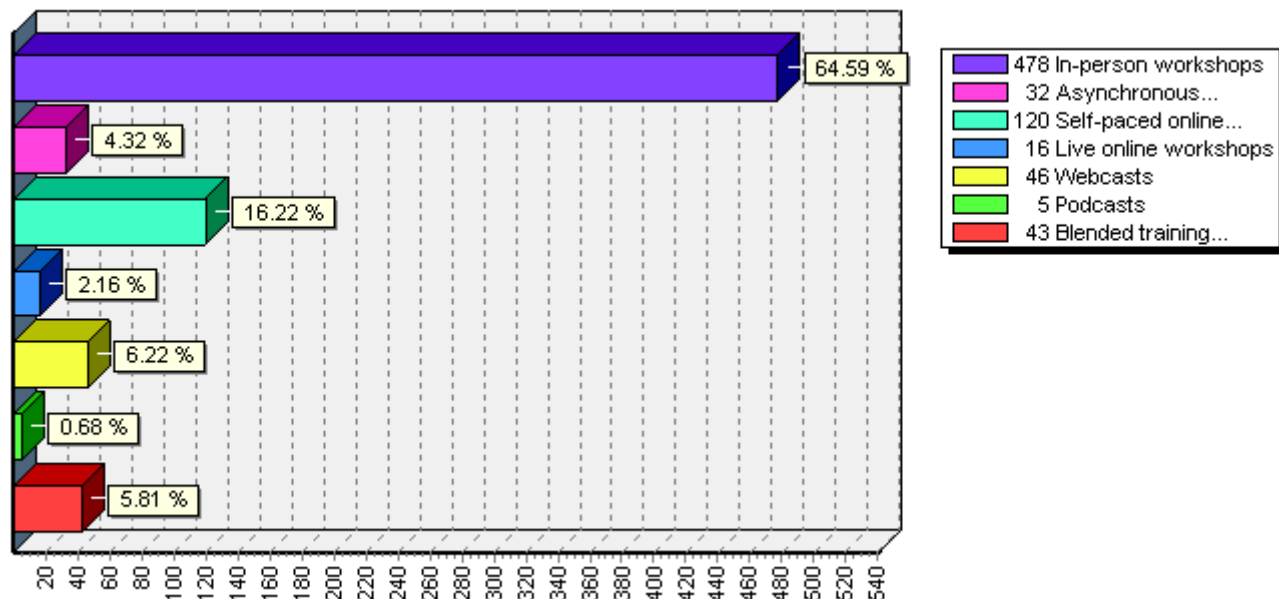
# Bar Graphs - OVERALL

## IP1 - CA Library Training Needs

[12] I am willing to participate in Infopeople training in the following formats (check all that apply):\*



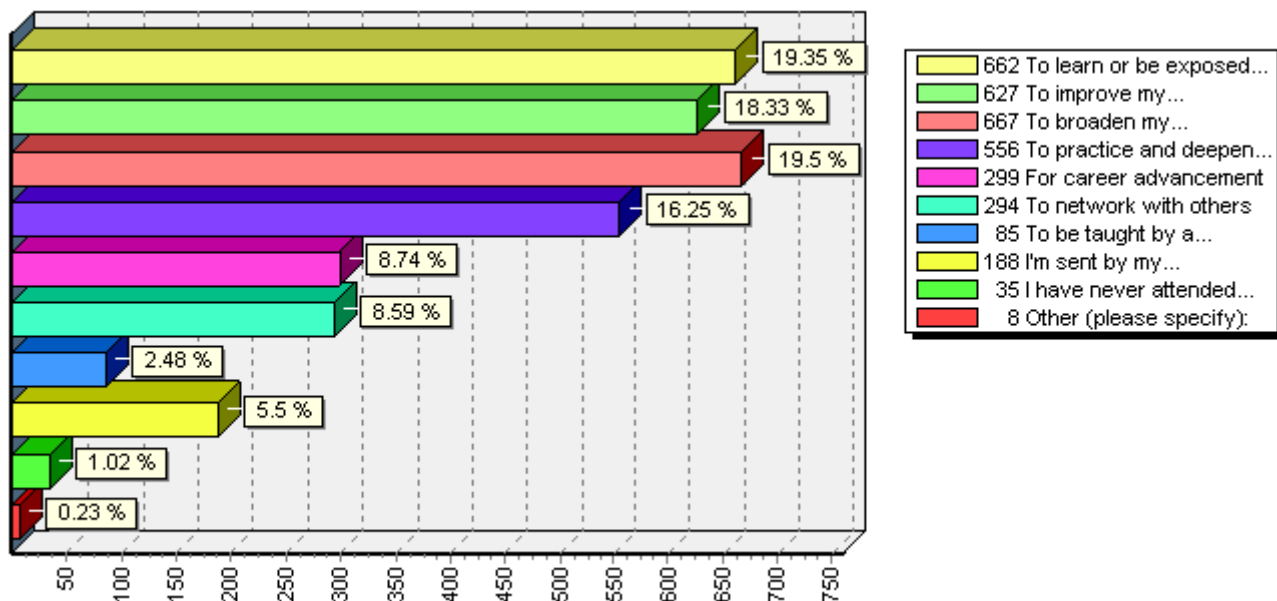
[13] My preferred training format is (check one):\*



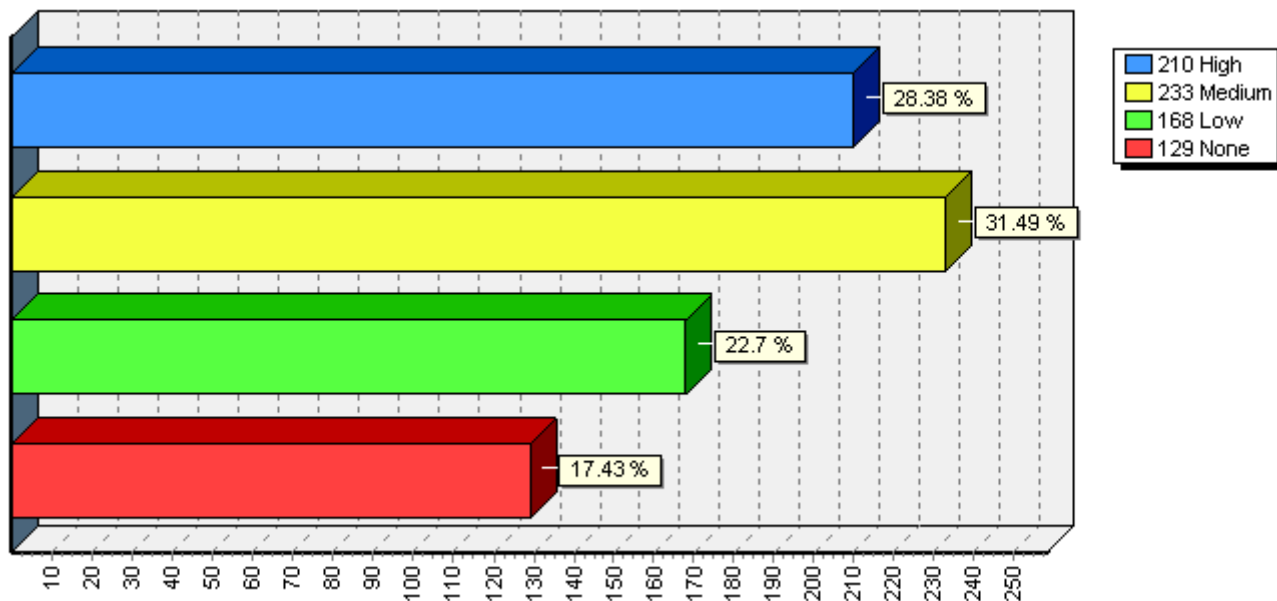
# Bar Graphs - OVERALL

## IP1 - CA Library Training Needs

[14] I attend training events for the following reasons (check all that apply):\*



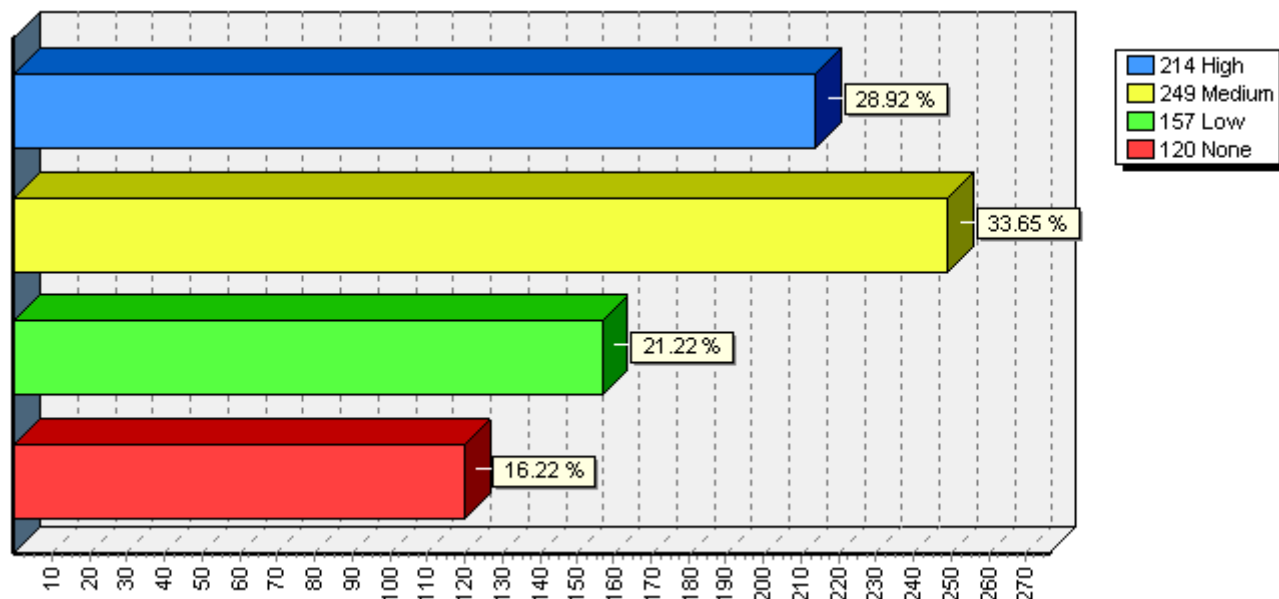
[15] Administration/management/supervision



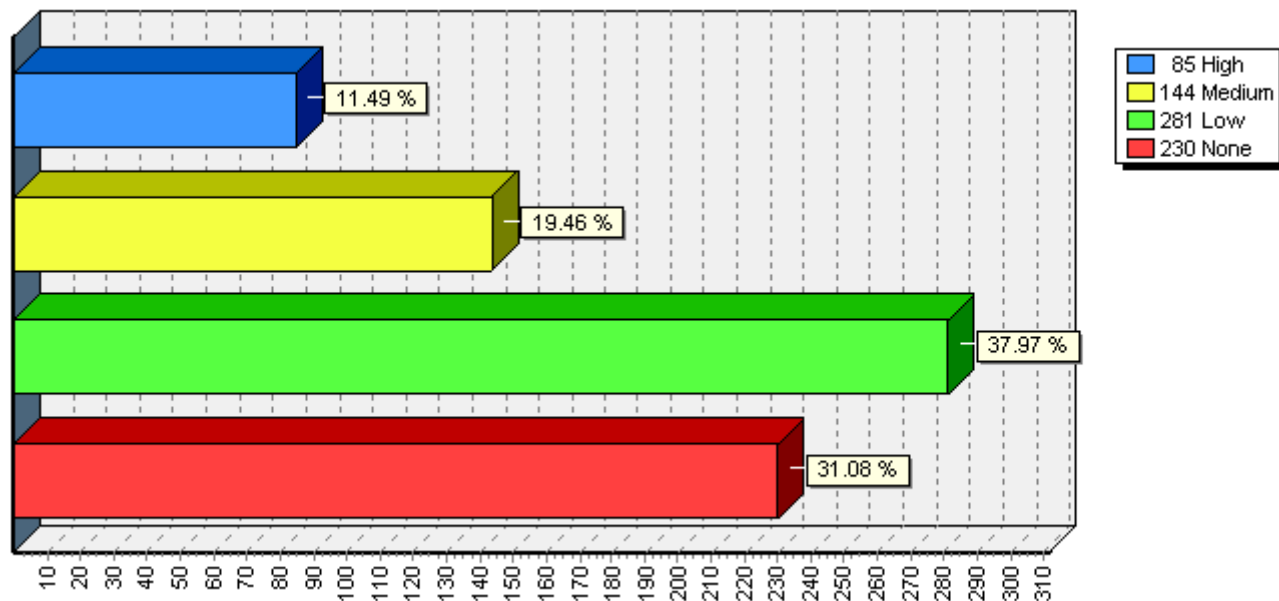
# Bar Graphs - OVERALL

## IP1 - CA Library Training Needs

[16] Adult services



[17] Buildings/facilities

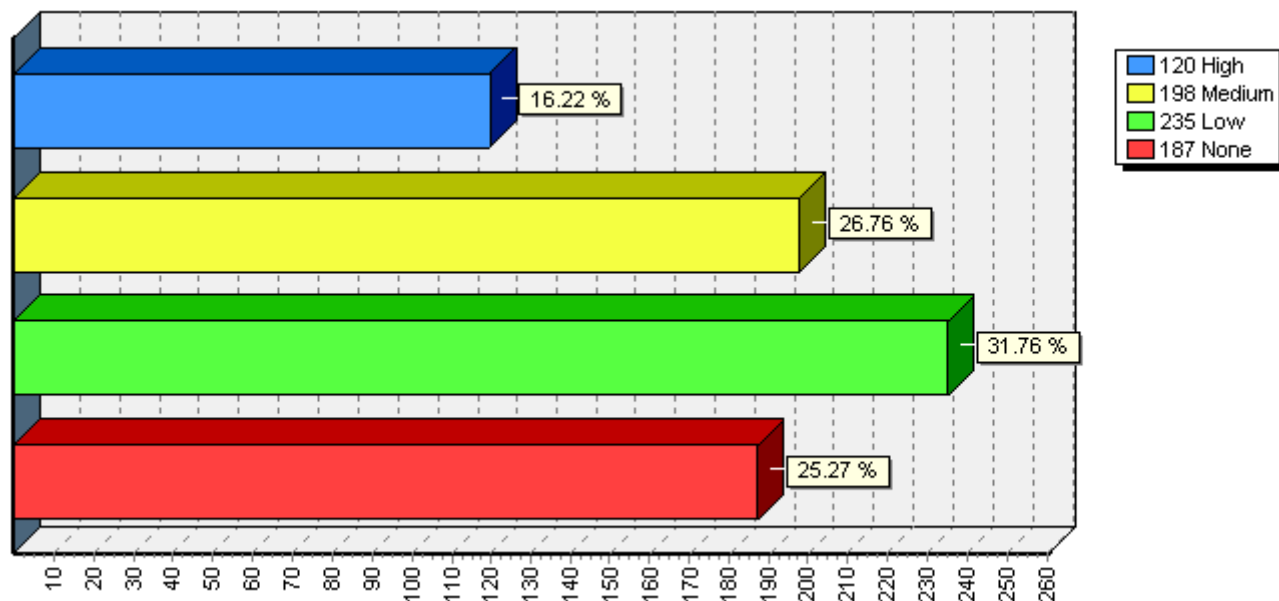




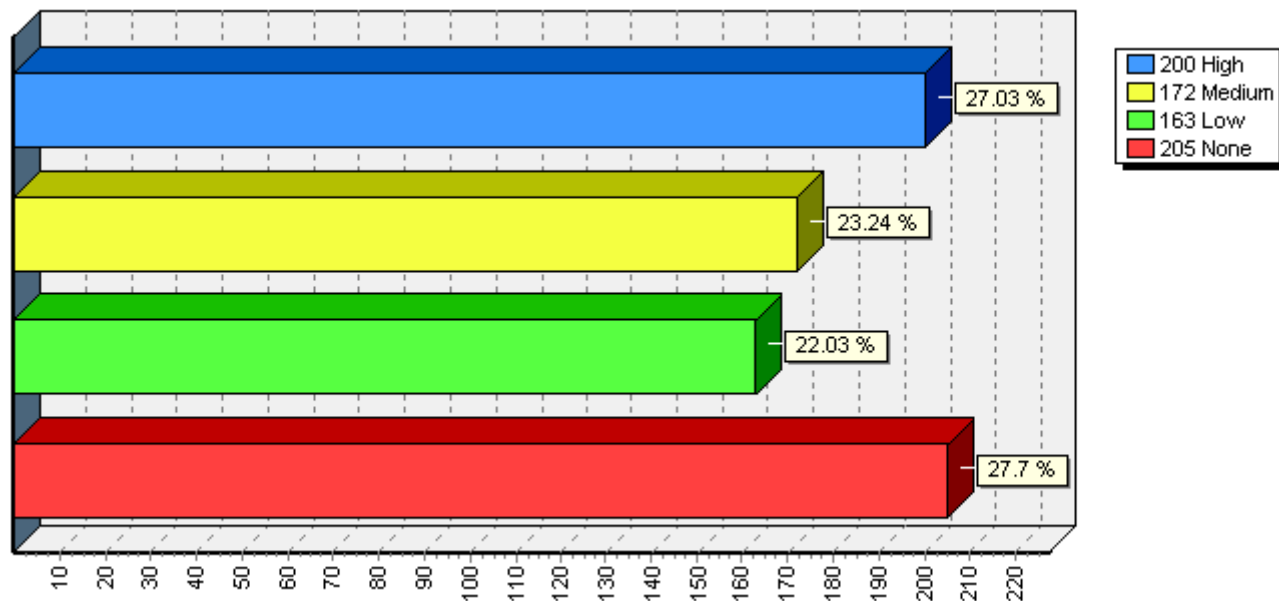
# Bar Graphs - OVERALL

## IP1 - CA Library Training Needs

[18] Cataloging and technical services



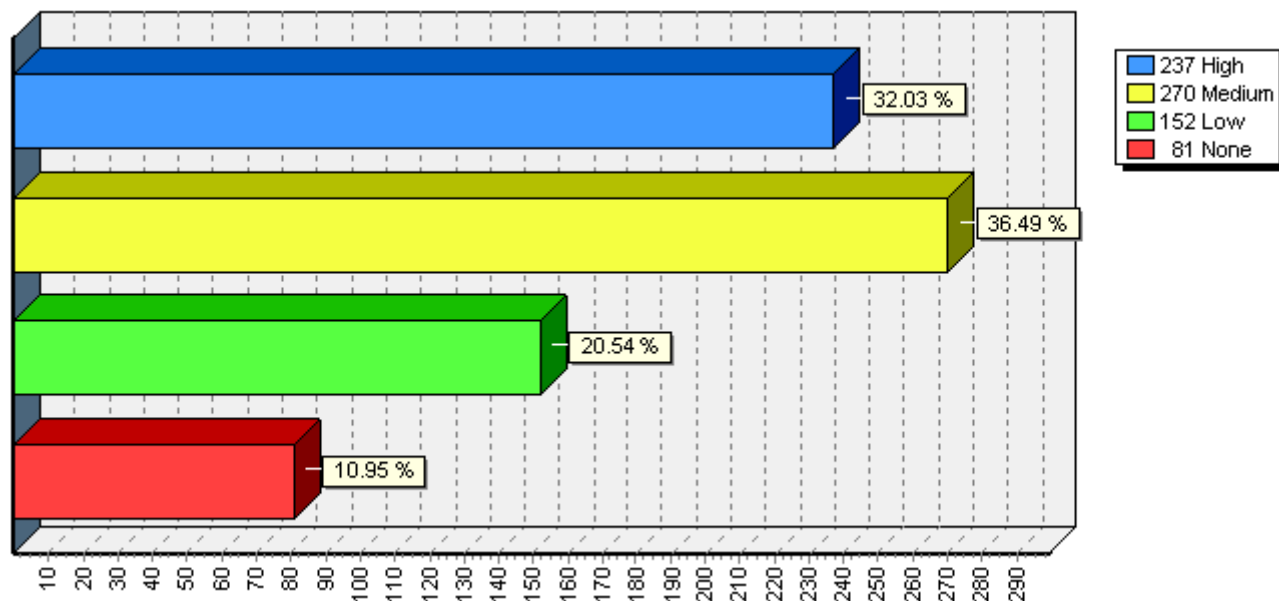
[19] Children's services



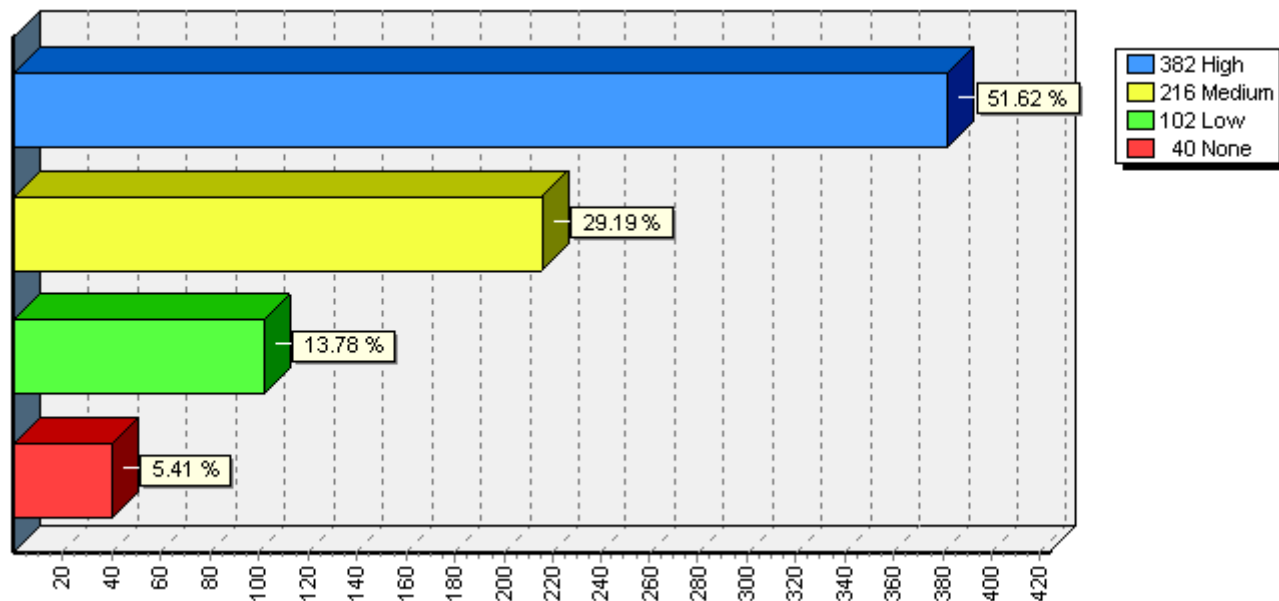
# Bar Graphs - OVERALL

## IP1 - CA Library Training Needs

[20] Collection development



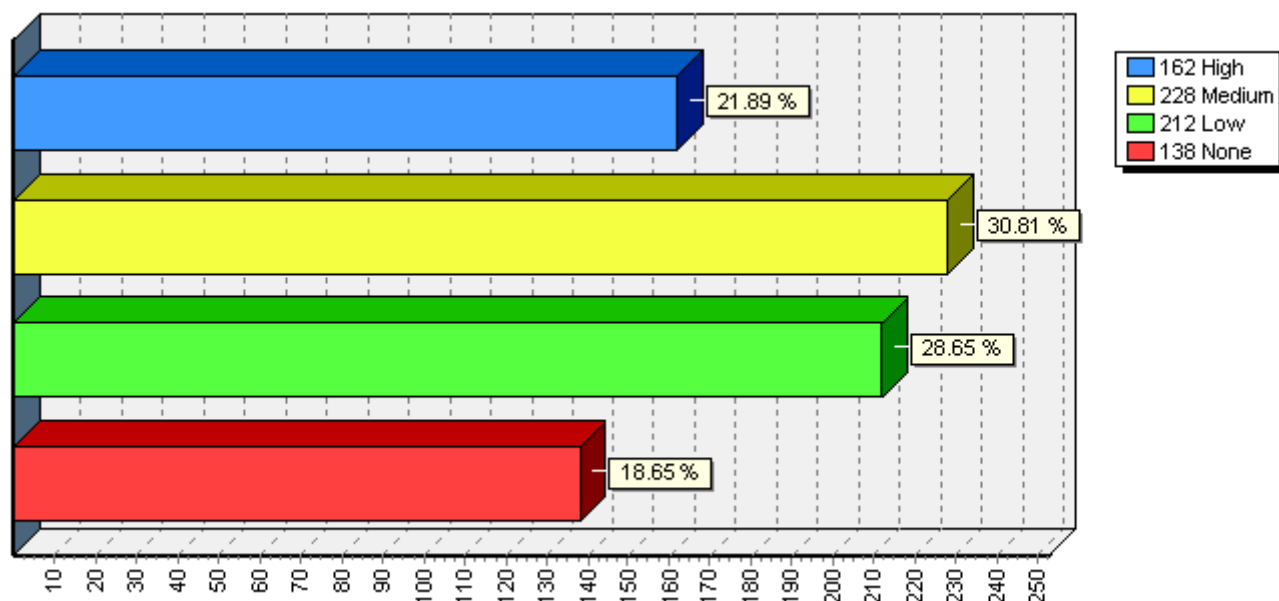
[21] Customer service



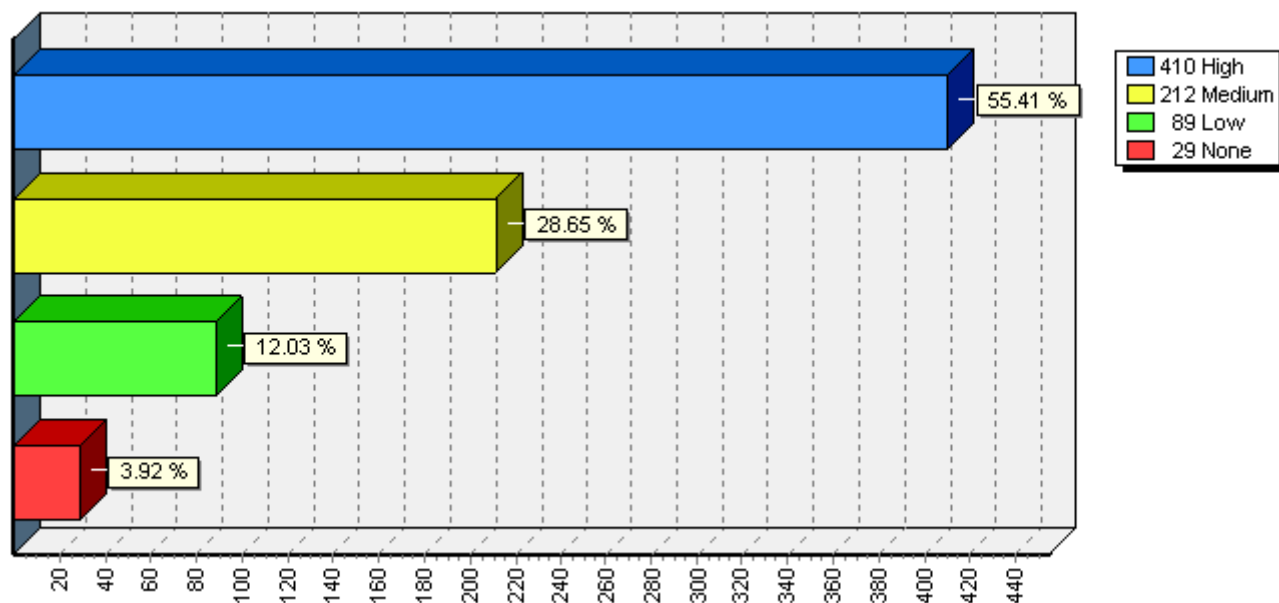
# Bar Graphs - OVERALL

## IP1 - CA Library Training Needs

[22] Digitization



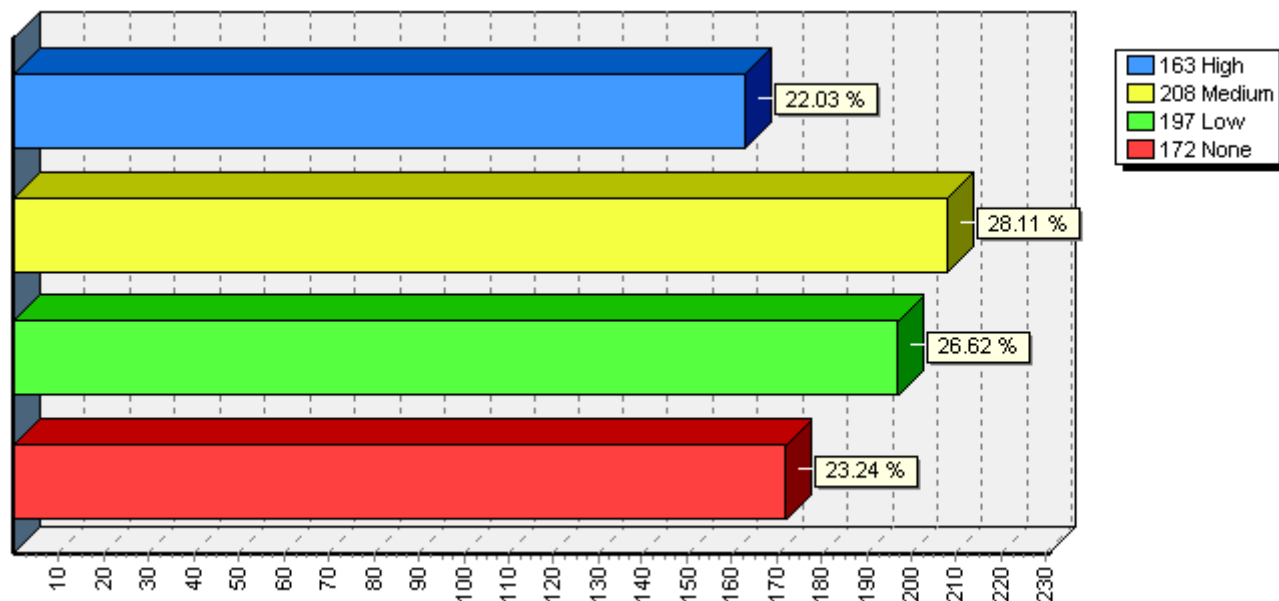
[23] Emerging technologies



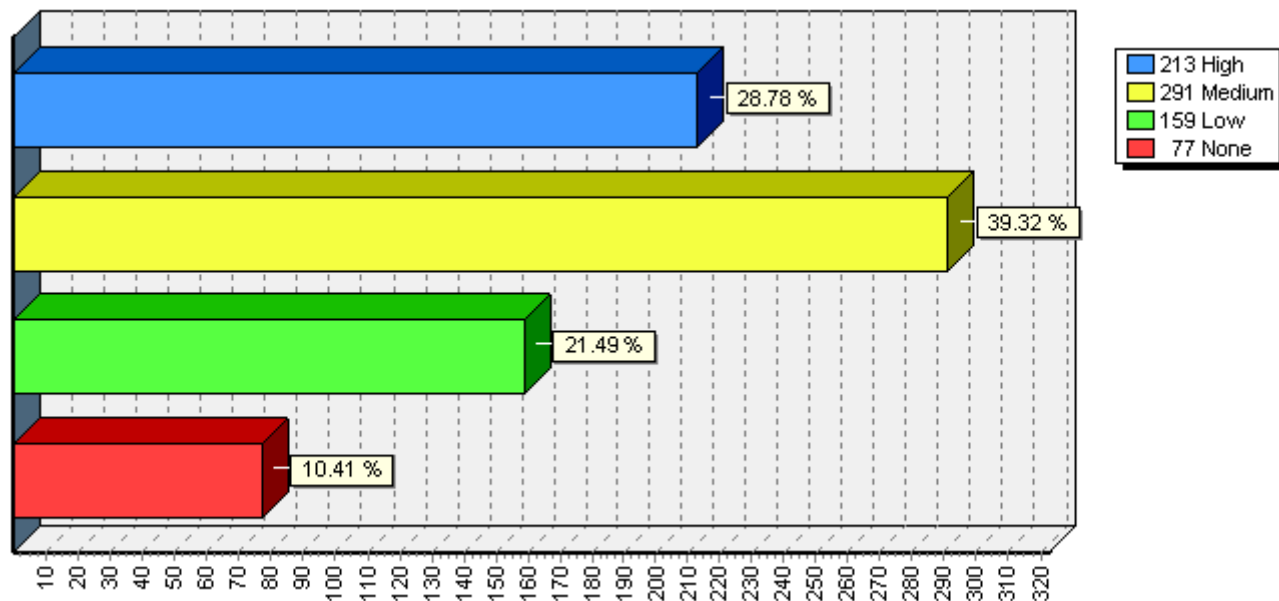
# Bar Graphs - OVERALL

## IP1 - CA Library Training Needs

[24] Grant writing and fundraising



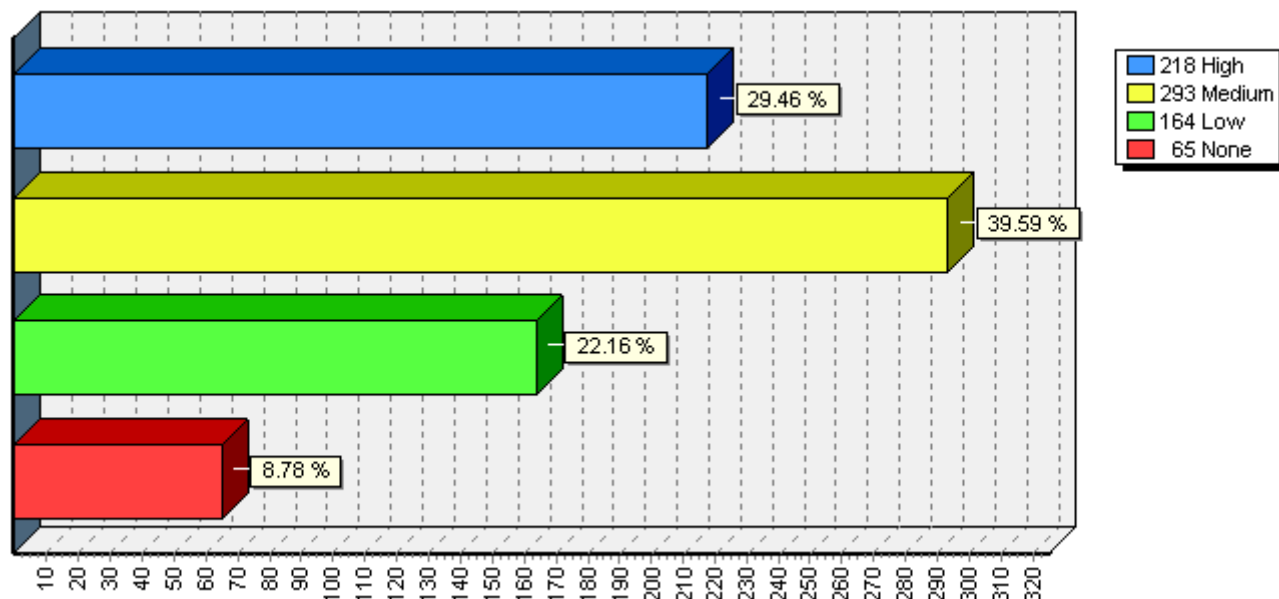
[25] Information literacy



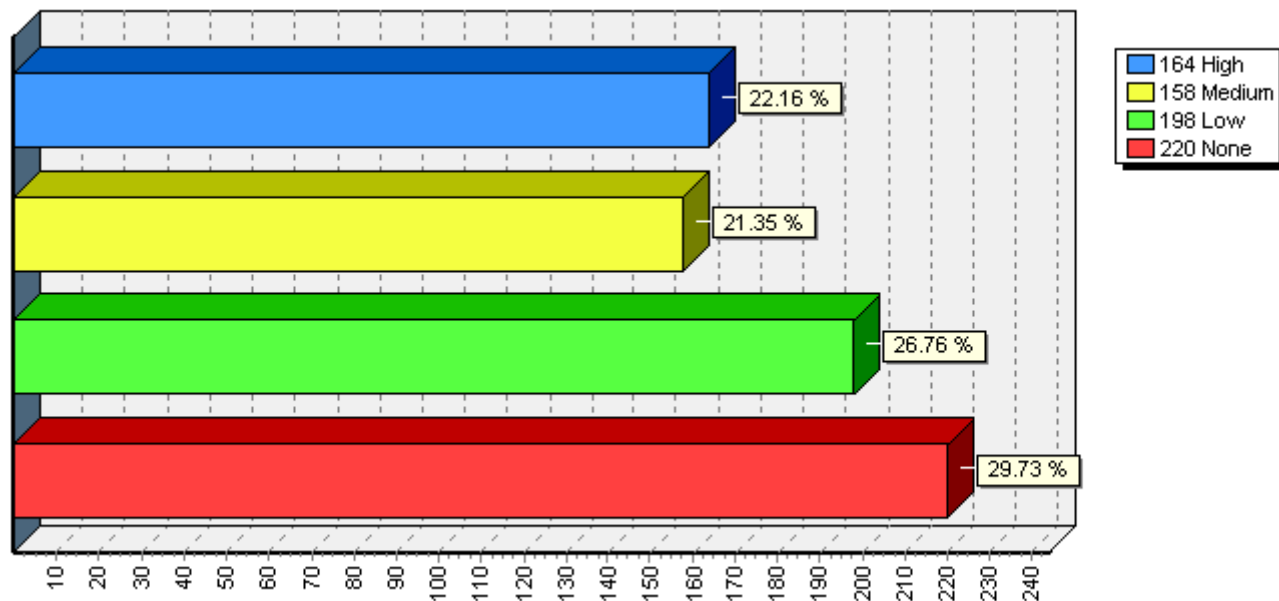
# Bar Graphs - OVERALL

## IP1 - CA Library Training Needs

[26] Instructional skills



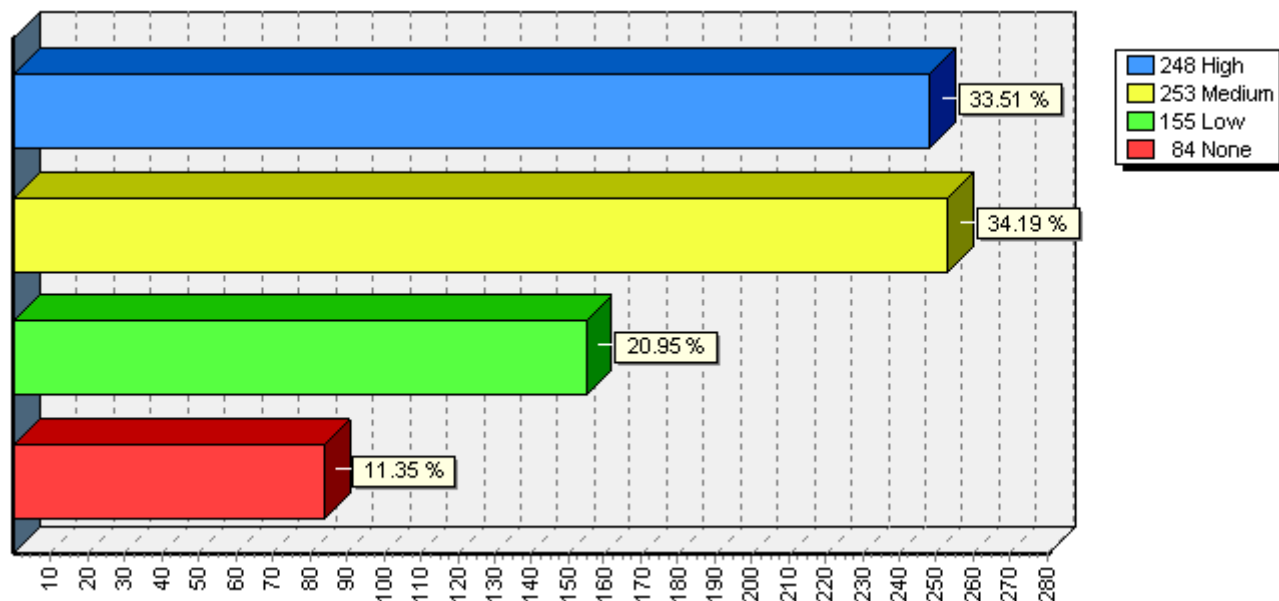
[27] K-12 services



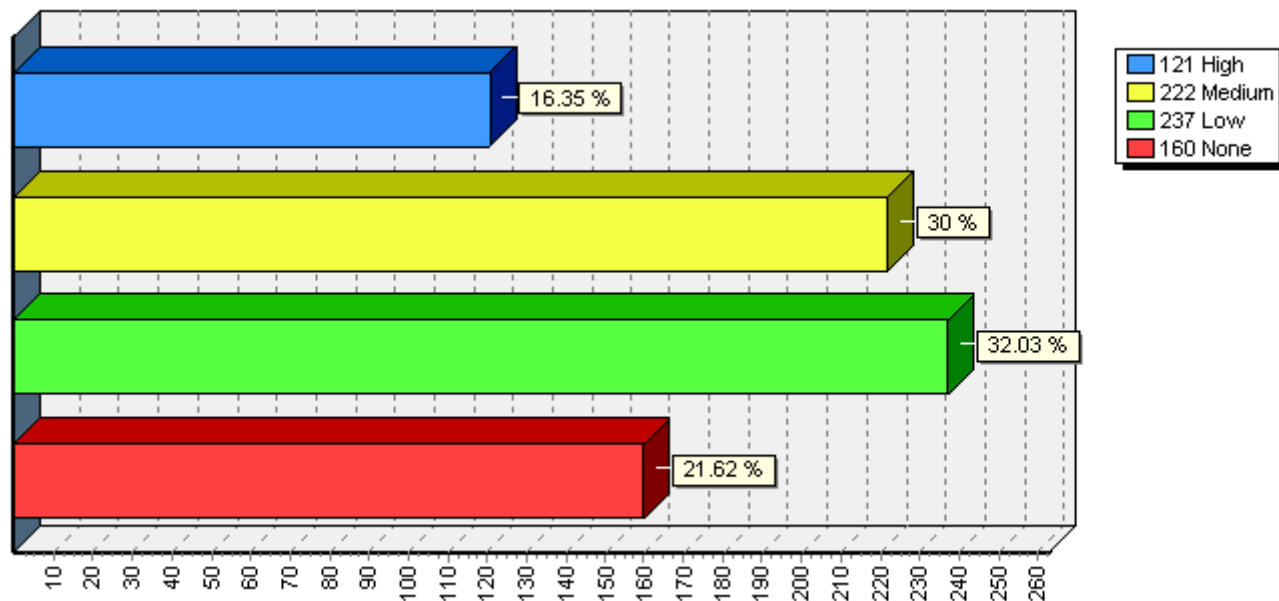
# Bar Graphs - OVERALL

## IP1 - CA Library Training Needs

[28] Leadership



[29] Library fundamentals

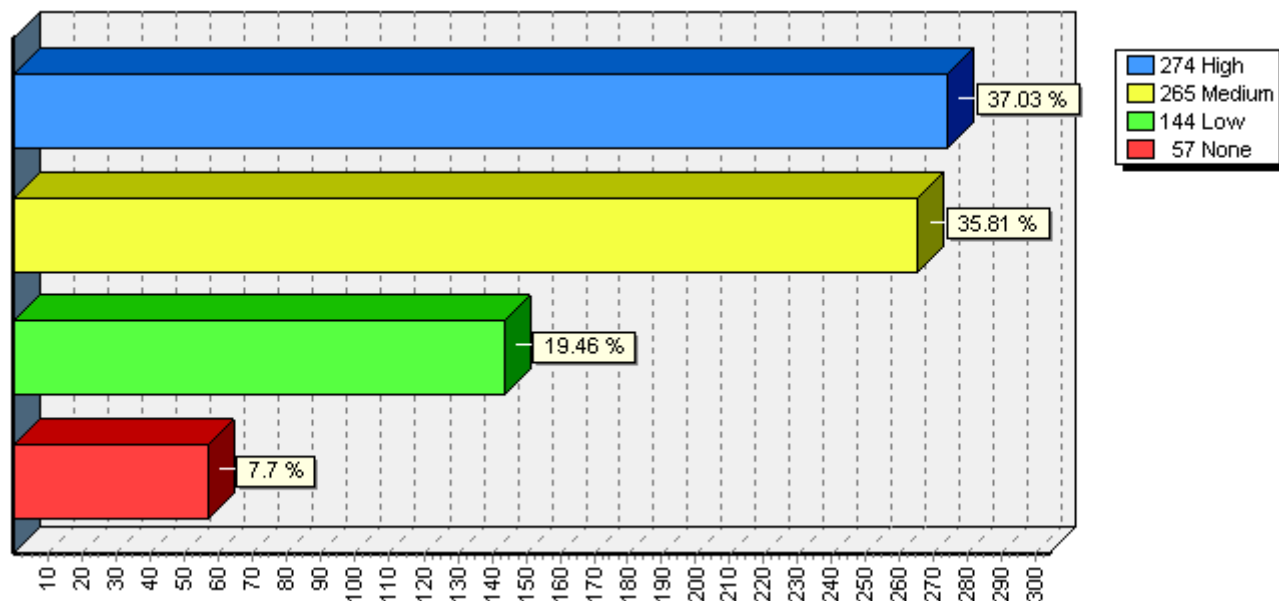


# Bar Graphs - OVERALL

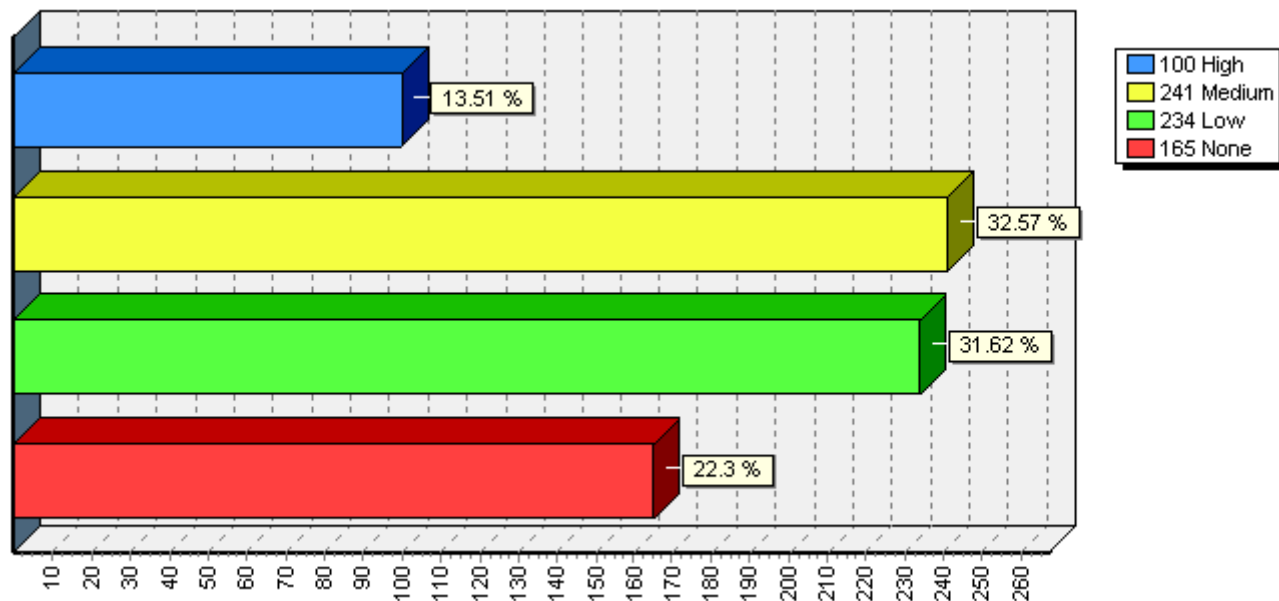
## IP1 - CA Library Training Needs

---

[30] Library-specific computer skills



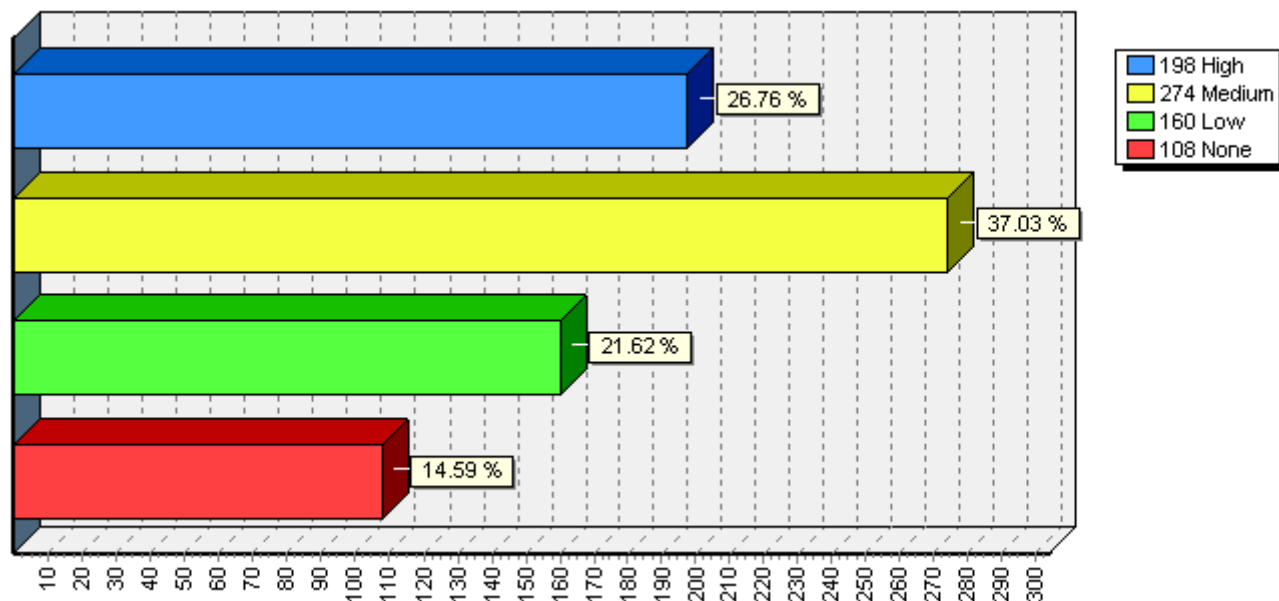
[31] Literacy



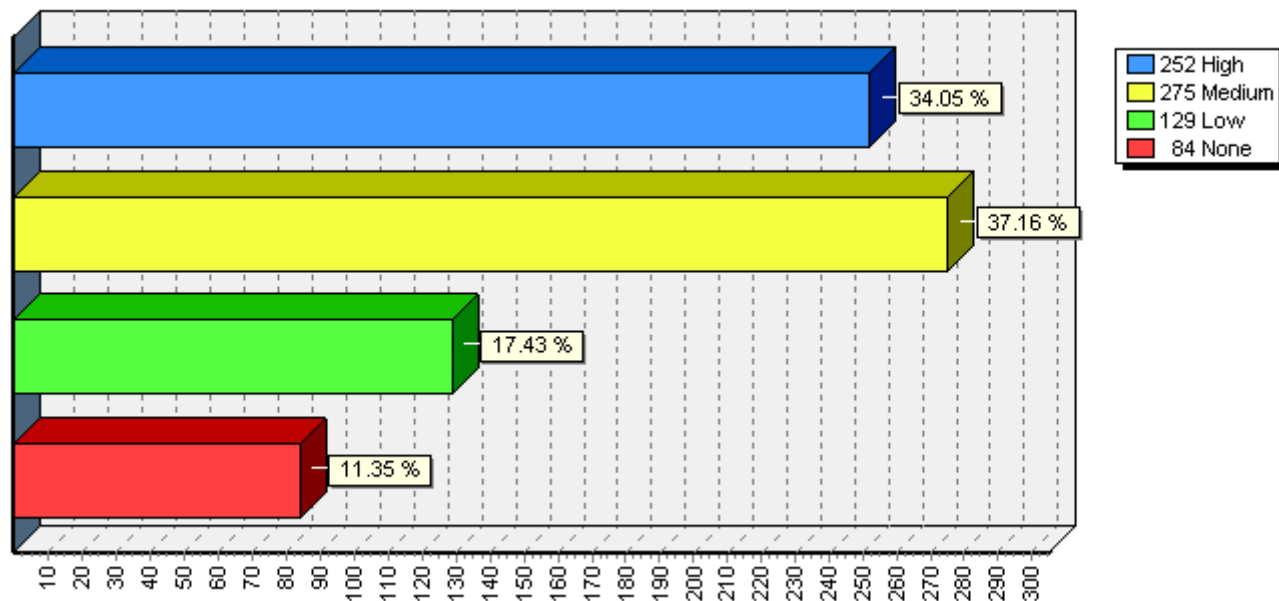
# Bar Graphs - OVERALL

## IP1 - CA Library Training Needs

[32] Marketing and public relations



[33] New service models

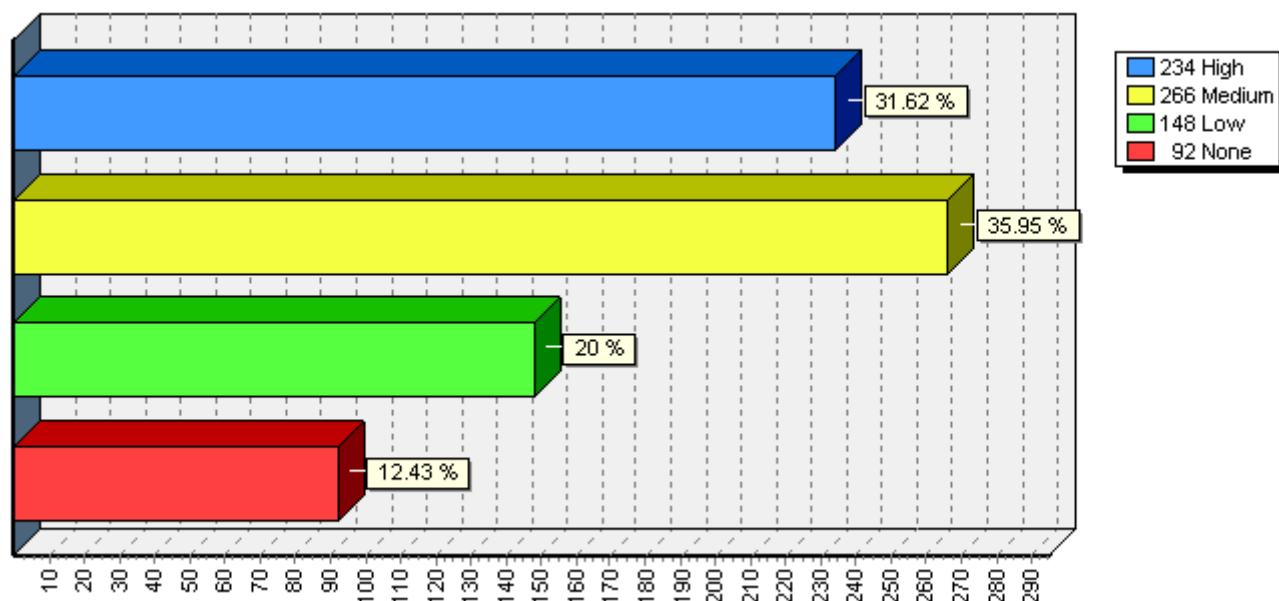




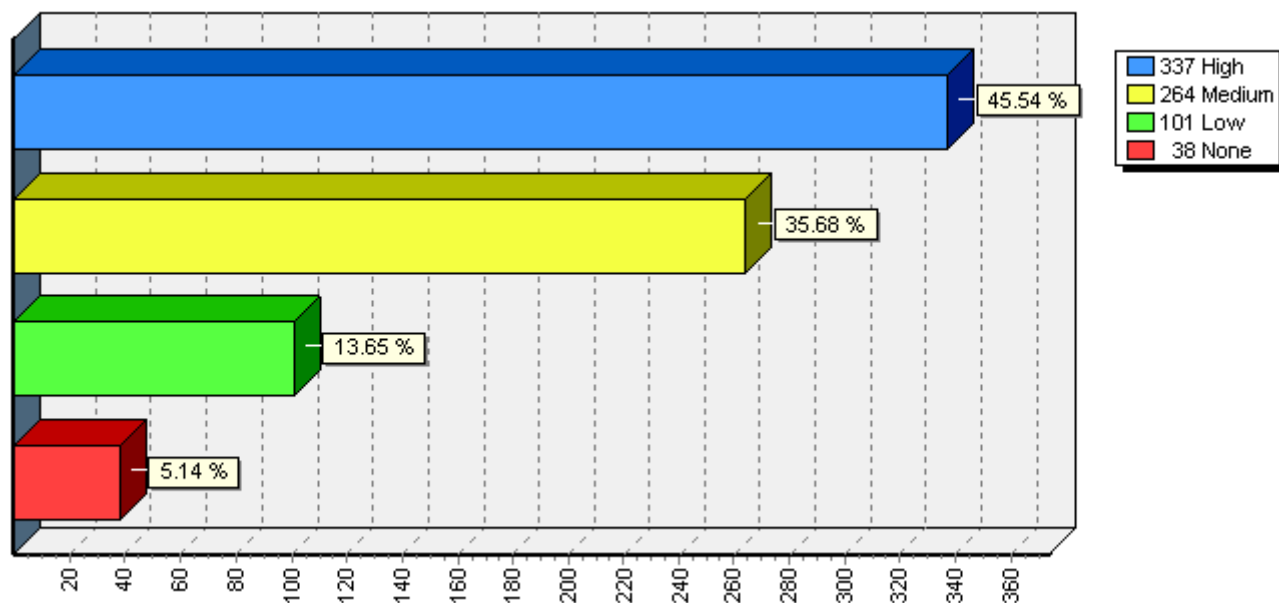
# Bar Graphs - OVERALL

## IP1 - CA Library Training Needs

[34] Outreach/community partnerships



[35] Personal and professional development and efficiency

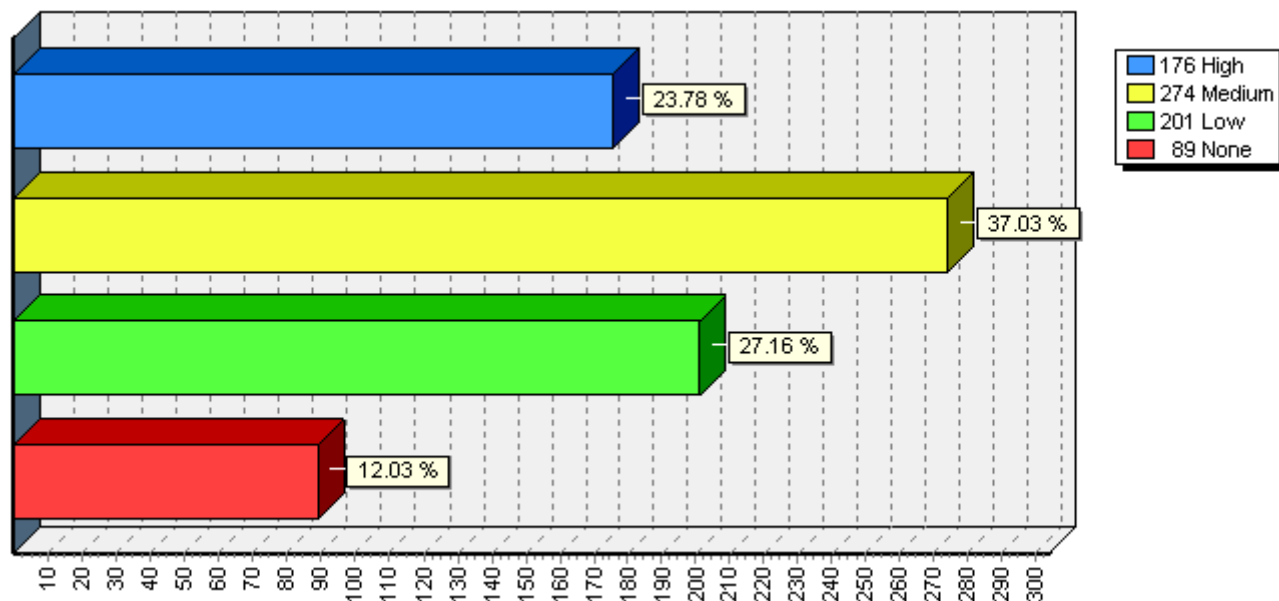


# Bar Graphs - OVERALL

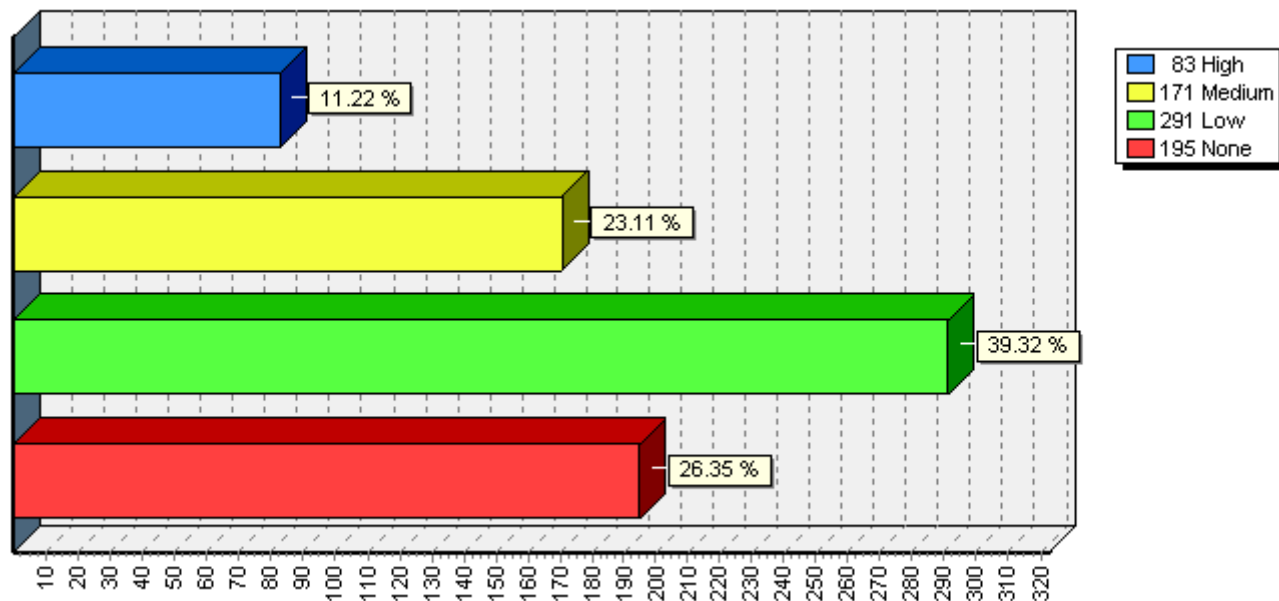
## IP1 - CA Library Training Needs

---

[36] Planning



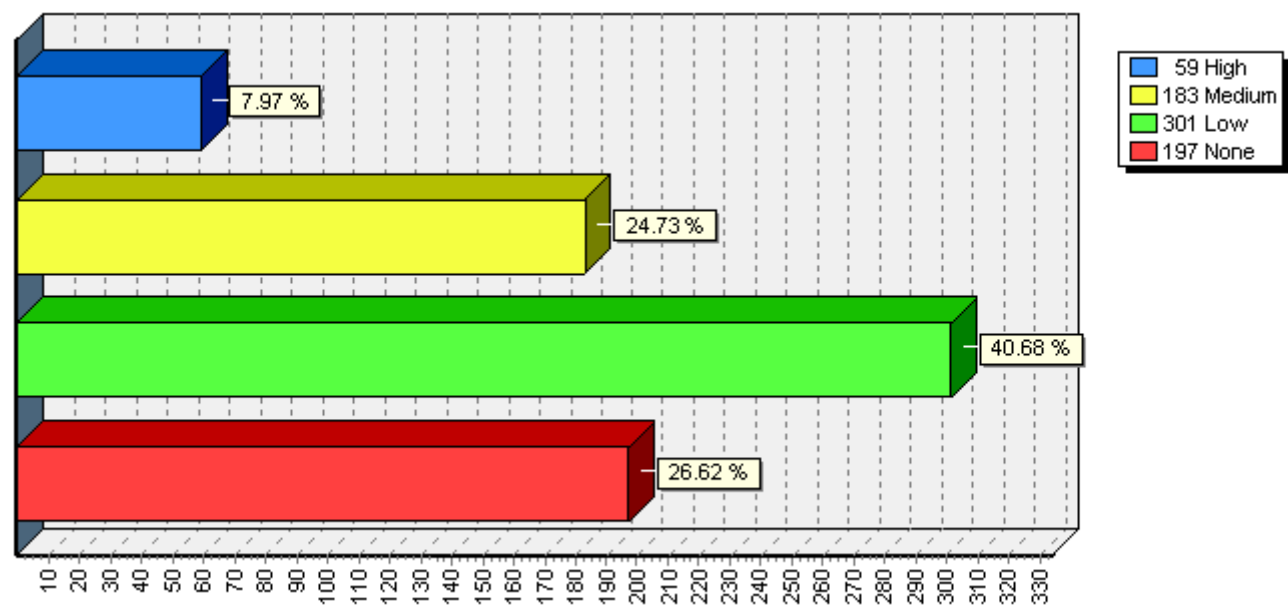
[37] Preservation



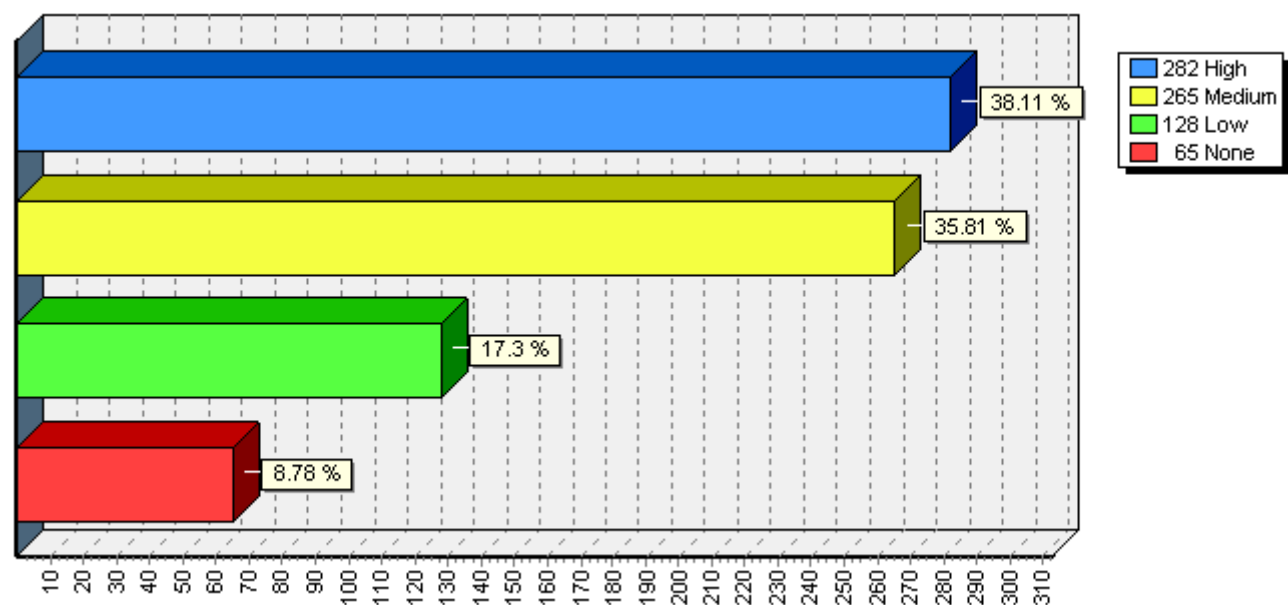
# Bar Graphs - OVERALL

## IP1 - CA Library Training Needs

[38] Records management



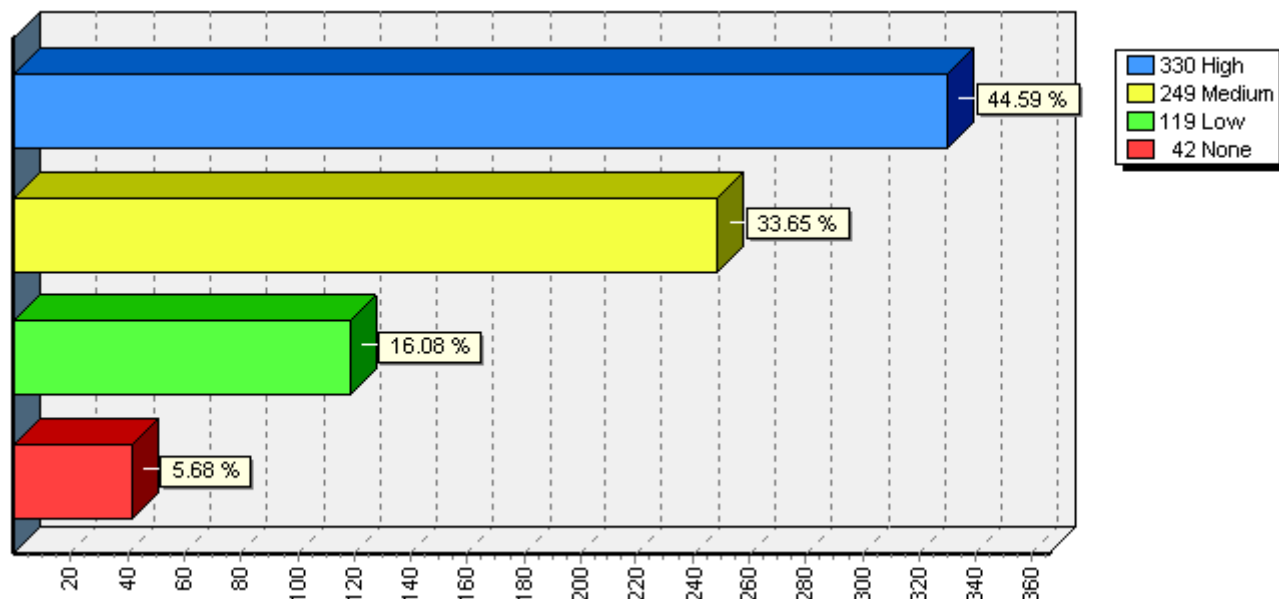
[39] Reference



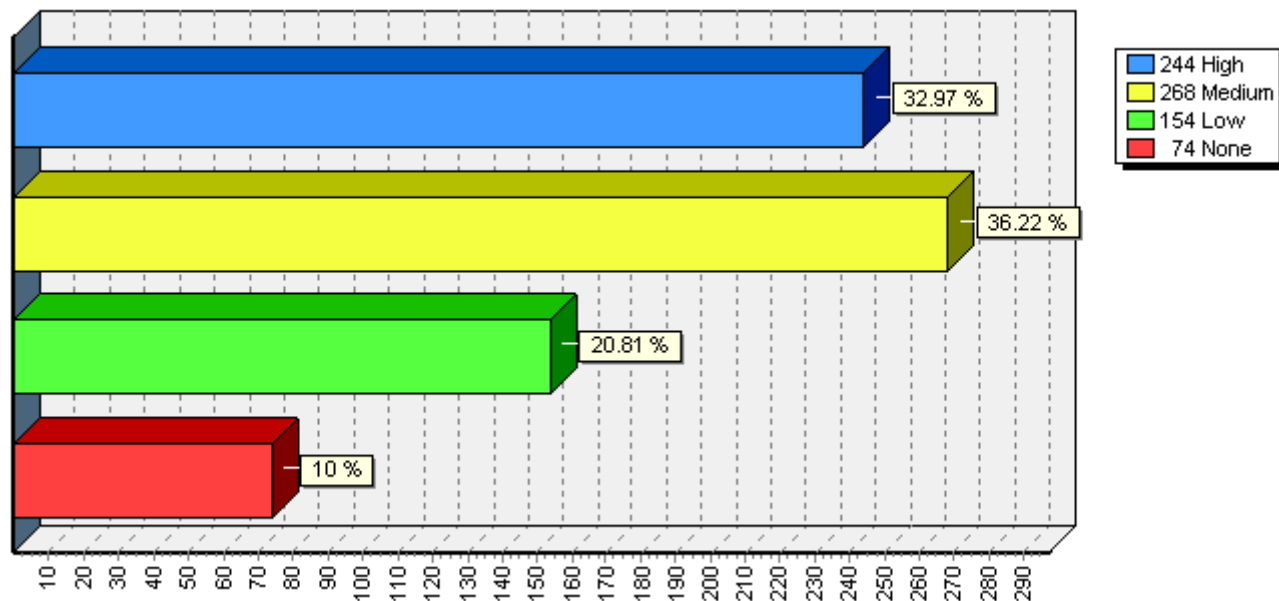
# Bar Graphs - OVERALL

## IP1 - CA Library Training Needs

[40] Searching skills



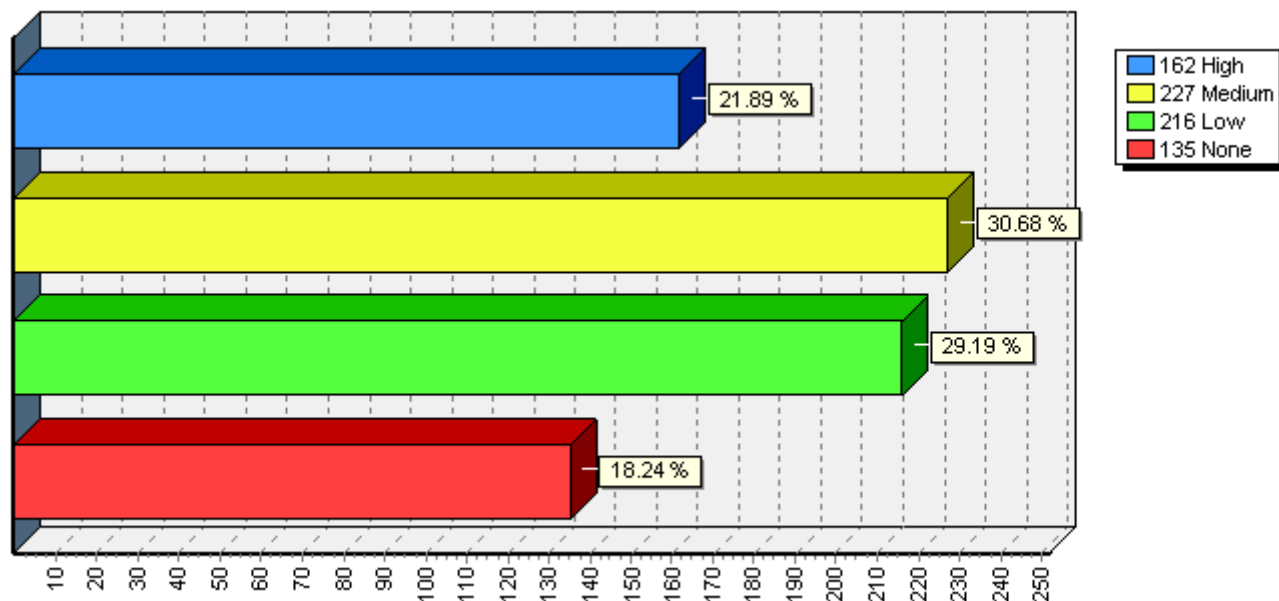
[41] Serving diverse communities



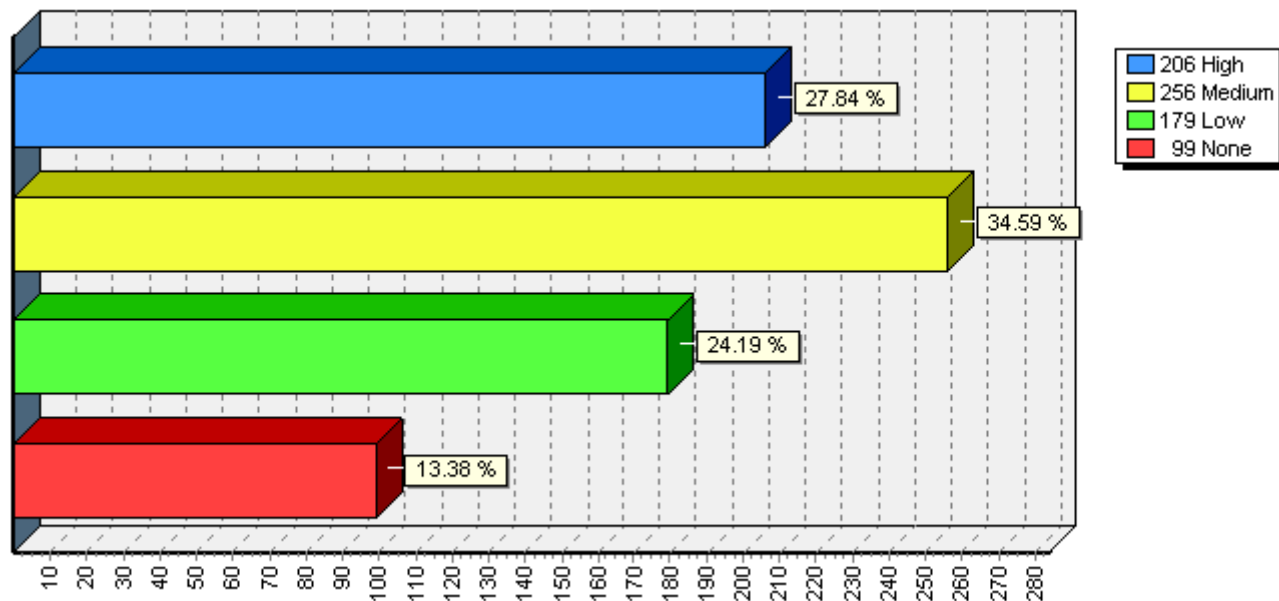
# Bar Graphs - OVERALL

## IP1 - CA Library Training Needs

[42] Technology/network management



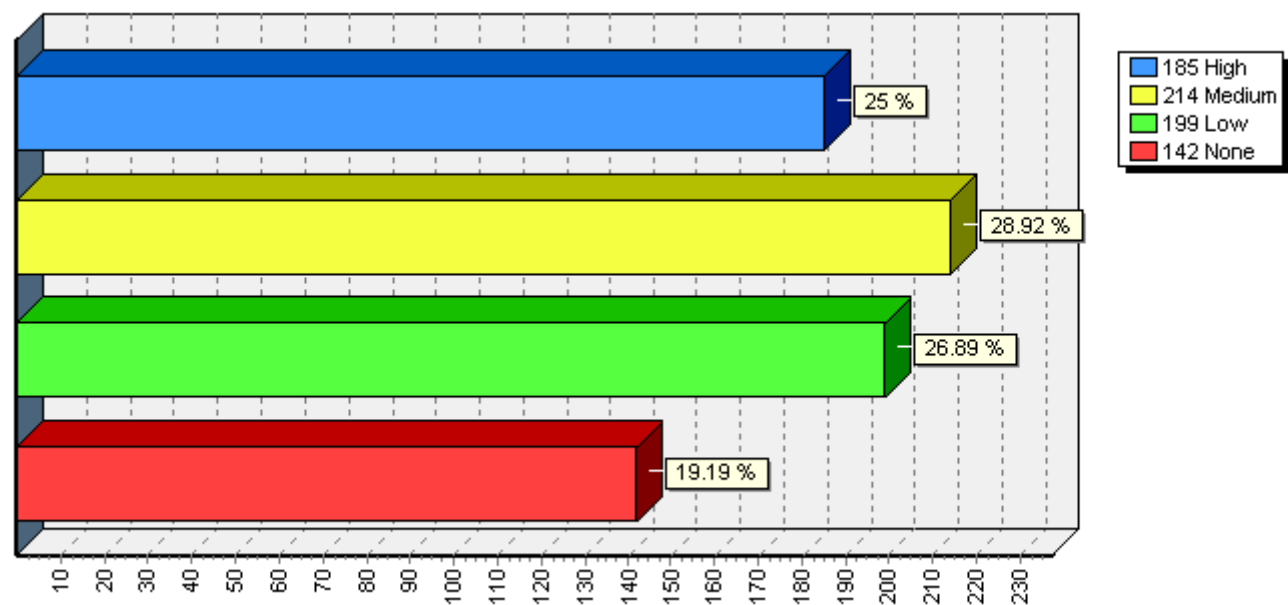
[43] Training in sources or techniques for specific subject areas (e.g., business, genealogy, government documents)



# Bar Graphs - OVERALL

## IP1 - CA Library Training Needs

[44] Website design, development, & maintenance



[45] Young adult/teen services

