

# American Community Survey (ACS) Product Types: Tables and Maps *Samples*

*Revised 06-07-11*



## United States

### Selected Social Characteristics in the United States: 2007 ?

Data Set: **2007 American Community Survey 1-Year Estimates**

Survey: **American Community Survey**

**Social** - Education, Marital Status, Relationships, Fertility, Grandparents...

**Economic** - Income, Employment, Occupation, Commuting to Work...

**Housing** - Occupancy and Structure, Housing Value and Costs, Utilities...

**Demographic** - Sex and Age, Race, Hispanic Origin, Housing Units...

**Narrative** - Text profile with graphs for easy analysis...

NOTE. Although the American Community Survey (ACS) produces population, demographic and housing unit estimates, it is the Census Bureau's Population Estimates Program that produces and disseminates the [official estimates of the population for the nation, states, counties, cities and towns and estimates of housing units for states and counties](#).

For more information on confidentiality protection, sampling error, nonsampling error, and definitions, see [Survey Methodology](#).

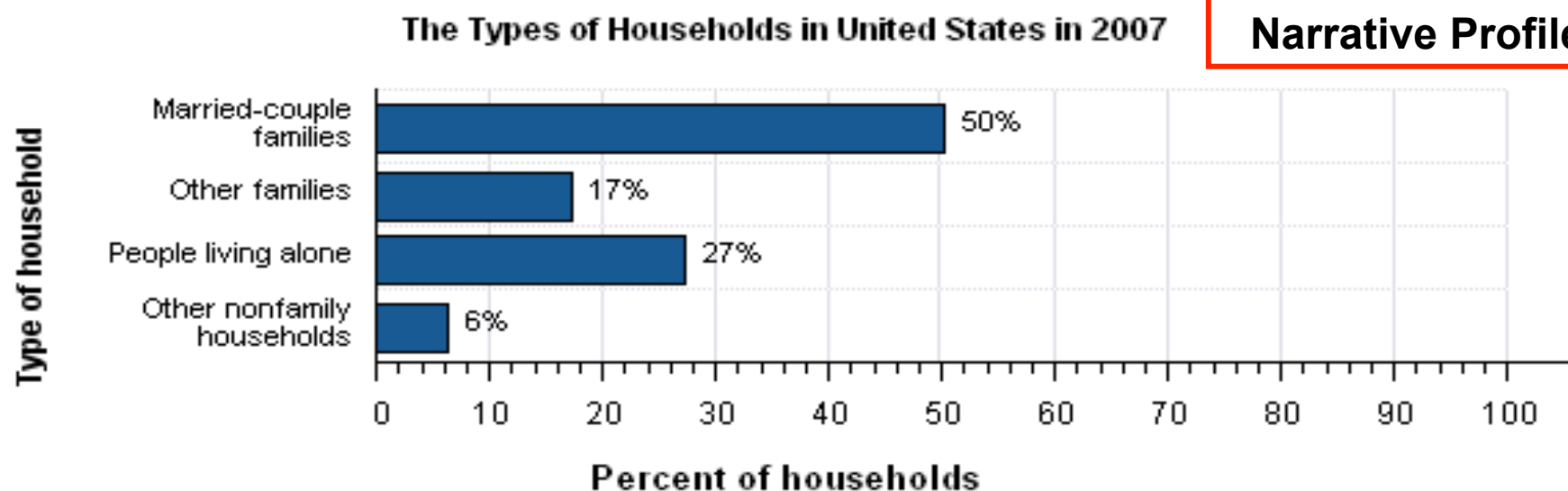
### Data Profiles (5)

- **Social**
- **Economic**
- **Housing**
- **Demographic**
- **Narrative**

Selected Social Characteristics in the United States: 2007	Estimate	Margin of Error	Percent	Margin of Error
<b>HOUSEHOLDS BY TYPE</b>				
<b>Total households</b>	<b>112,377,977</b>	<b>+/-144,356</b>	<b>100%</b>	<b>(X)</b>
Family households (families)	75,119,260	+/-150,790	66.8%	+/-0.1
With own children under 18 years	34,999,584	+/-89,167	31.1%	+/-0.1
Married-couple family	55,867,091	+/-163,903	49.7%	+/-0.1
With own children under 18 years	24,086,303	+/-93,744	21.4%	+/-0.1
Male householder, no wife present, family	5,208,231	+/-39,566	4.6%	+/-0.1
With own children under 18 years	2,565,010	+/-30,360	2.3%	+/-0.1
Female householder, no husband present, family	14,043,938	+/-55,811	12.5%	+/-0.1
With own children under 18 years	8,348,271	+/-43,810	7.4%	+/-0.1
Nonfamily households	37,258,717	+/-79,752	33.2%	+/-0.1
Householder living alone	30,645,140	+/-81,159	27.3%	+/-0.1
65 years and over	10,264,914	+/-39,411	9.1%	+/-0.1
Households with one or more people under 18 years	38,639,706	+/-87,369	34.4%	+/-0.1
Households with one or more people 65 years and over	26,256,977	+/-51,171	23.4%	+/-0.1

**HOUSEHOLDS AND FAMILIES:** In 2007 there were 112.4 million households in United States. The average household size was 2.6 people.

Families made up 67 percent of the households in United States. This figure includes both married-couple families (50 percent) and other families (17 percent). Nonfamily households made up 33 percent of all households in United States. Most of the nonfamily households were people living alone, but some were composed of people living in households in which no one was related to the householder.



Source: American Community Survey, 2007

**NATIVITY AND LANGUAGE:** Thirteen percent of the people living in United States in 2007 were foreign born. Eighty-seven percent was native. Of those born in United States, 59 percent was born in their state of residence.

Among people at least five years old living in United States in 2007, 20 percent spoke a language other than English at home. Of those speaking a language other than English at home, 62 percent spoke Spanish and 38 percent spoke some other language; 44 percent reported that they did not speak English "very well."

# Comparison Profiles

- Display data from two different one-year profiles side-by-side
- Include indication (asterisk “\*”) of significant difference between two sets of estimates
- Available for 1-year estimates only
- Four types available – same characteristics as Data Profiles
  - Social
  - Economic
  - Housing
  - Demographic

An \* indicates that the estimate is significantly different (at a 90% confidence level) than the estimate from the most current year. A 'c' indicates the estimates for that year and the current year are both controlled; a statistical test is not appropriate.

## Comparison Profile

Selected Social Characteristics in the United States: 2007	<b>2007 Percent Distribution</b>	<b>2006 Percent Distribution</b>	Statistical Significance
<b>HOUSEHOLDS BY TYPE</b>			
<b>Total households</b>	<b>112,377,977</b>	<b>111,617,402</b>	*
Family households (families)	66.8%	66.8%	
With own children under 18 years	31.1%	31.3%	*
Married-couple family	49.7%	49.7%	
With own children under 18 years	21.4%	21.6%	*
Male householder, no wife present, family	4.6%	4.6%	
With own children under 18 years	2.3%	2.2%	
Female householder, no husband present, family	12.5%	12.5%	
With own children under 18 years	7.4%	7.4%	
Nonfamily households	33.2%	33.2%	
Householder living alone	27.3%	27.3%	
65 years and over	9.1%	9.1%	
Households with one or more people under 18 years	34.4%	34.6%	*
Households with one or more people 65 years and over	23.4%	23.2%	*
Average household size	2.61	2.61	
Average family size	3.20	3.20	
<b>RELATIONSHIP</b>			
<b>Population in households</b>	<b>293,499,975</b>	<b>291,332,841</b>	<b>c</b>
Householder	38.3%	38.3%	
Spouse	19.0%	19.0%	
Child	30.5%	30.5%	
Other relatives	6.7%	6.7%	

# Selected Population Profiles

- Most detailed race and ethnicity data
- Provide summary data for detailed groups
  - Race / ethnicity / tribe
  - Ancestry
  - Country of birth
- Two thresholds must be met
  - Total population size of area = 500,000 or more
  - Size of group of interest
    - One-year estimates = 65,000 or more
    - Three-year estimates = 20,000 or more
- Column displays: (1) area; (2) group of interest

Not available for 5-year estimates

Race or Ethnic Groups   Ancestry Groups   Country of Birth

Select a race or ethnic group and click 'Show Result'

- Total population
- White alone
- White in combination with one or more other races
- White alone or in combination with one or more other races
- Black alone
- Black in combination with one or more other races
- Black alone or in combination with one or more other races
- AIAN alone
- .. American Indian alone
- .. Alaska Native alone

**Selected Population Profiles**

Race or Ethnic Groups   **Ancestry Groups**   Country of Birth

Select an ancestry group and click 'Show Result'

- Afghan (600)
- Albanian (100)
- American (939-994)
- Arab (400-415, 417-418, 421-430, 435-481, 490-499)
- .. Arab/Arabic (495-499)
- .. Egyptian (402-403)
- .. Lebanese (425-426)
- .. Moroccan (406-407)
- .. Palestinian (465-467)
- .. Syrian (429-430)

Race or Ethnic Groups   Ancestry Groups   **Country of Birth**

Select a country of birth and click 'Show Result'

- Native
- Foreign born
- .. Africa:
- ... Eastern Africa:
- .... Ethiopia
- .... Kenya
- .... Somalia
- ... Northern Africa:
- .... Egypt
- ... Southern Africa

## United States

### S0201. Selected Population Profile in the United States ?

Country of Birth: Japan

Data Set: 2007 American Community Survey 1-Year Estimates

Survey: American Community Survey

## Selected Population Profiles

Subject	Total population	Margin of Error	Japan	Margin of Error
<b>Total population</b>	<b>301,621,159</b>	*****	<b>352,933</b>	<b>+/-11,315</b>
<b>TOTAL NUMBER OF RACES REPORTED</b>				
One race	97.8%	+/-0.1	97.9%	+/-0.4
Two races	2.0%	+/-0.1	2.1%	+/-0.4
Three races	0.1%	+/-0.1	0.0%	+/-0.1
Four or more races	0.0%	+/-0.1	0.0%	+/-0.1
<b>SEX AND AGE</b>				
Male	49.3%	+/-0.1	34.9%	+/-1.2
Female	50.7%	+/-0.1	65.1%	+/-1.2
<b>LANGUAGE SPOKEN AT HOME AND ABILITY TO SPEAK ENGLISH</b>				
<b>Population 5 years and over</b>	<b>280,950,438</b>	<b>+/-17,610</b>	<b>346,391</b>	<b>+/-10,699</b>
English only	80.3%	+/-0.1	18.5%	+/-1.1
Language other than English	19.7%	+/-0.1	81.5%	+/-1.1
Speak English less than "very well"	8.7%	+/-0.1	50.8%	+/-1.5
<b>EMPLOYMENT STATUS</b>				
<b>Population 16 years and over</b>	<b>236,416,572</b>	<b>+/-47,218</b>	<b>329,589</b>	<b>+/-9,485</b>
In labor force	64.8%	+/-0.1	52.6%	+/-1.5
Civilian labor force	64.4%	+/-0.1	52.5%	+/-1.5
Employed	60.3%	+/-0.1	50.7%	+/-1.6
Unemployed	4.1%	+/-0.1	1.8%	+/-0.4
Percent of civilian labor force	6.3%	+/-0.1	3.4%	+/-0.8
Armed Forces	0.4%	+/-0.1	0.1%	+/-0.1
Not in labor force	35.2%	+/-0.1	47.4%	+/-1.5



# Detailed Tables

- Foundation upon which other data products are built
  - Most detailed data on all topics and geographic areas
  - Basic distributions of characteristics that show estimates and associated margins of error
- Over 1,200 Detailed Tables available, with distributions for . . .
  - More than 500 characteristics; more than 300 race and Hispanic origin iterations
  - 81 imputation tables
- Base (B) tables may have collapsed (C) versions

# Detailed Tables: Example of Topics

- Sex by Age by Race and Hispanic Origin
- Means of Transportation to Work by Travel Time to Work
- Median Number of Rooms in Housing Units
- School Enrollment by Level of School
- Poverty Status in the past 12 Months by Sex and Age

Table Name

Table Number

[B16007. AGE BY LANGUAGE SPOKEN AT HOME FOR THE POPULATION 5 YEARS AND OVER -](#)

[Universe: POPULATION 5 YEARS AND OVER](#)

Universe

Data Set: [2007 American Community Survey 1-Year Estimates](#)

Survey: American Community Survey

Data Source

Collapsed Version

View the [collapsed version of this table](#). Geographies missing from this table are listed below the table.

	United States	
	Estimate	Margin of Error
Total:	280,950,438	+/-17,610
5 to 17 years:	53,237,254	+/-25,343
Speak only English	42,318,910	+/-46,666
Speak Spanish	7,872,291	+/-34,011
Speak other Indo-European languages	1,478,516	+/-22,745
Speak Asian and Pacific Island languages	1,173,442	+/-17,303
Speak other languages	394,095	+/-16,269
18 to 64 years:	189,872,626	+/-26,305
Speak only English	150,634,696	+/-85,397
Speak Spanish	24,333,144	+/-59,411
Speak other Indo-European languages	7,033,993	+/-53,749
Speak Asian and Pacific Island languages	6,201,891	+/-36,396
Speak other languages	1,668,902	+/-31,150
65 years and over:	37,840,558	+/-17,617
Speak only English	32,552,347	+/-31,473
Speak Spanish	2,341,642	+/-12,989
Speak other Indo-European languages	1,808,221	+/-19,638
Speak Asian and Pacific Island languages	941,093	+/-9,916
Speak other languages	197,255	+/-7,490

Margin of Error

Detailed Tables

Source: U.S. Census Bureau, 2007 American Community Survey

**C16007. AGE BY LANGUAGE SPOKEN AT HOME FOR THE POPULATION 5 YEARS AND OVER -**

Universe: POPULATION 5 YEARS AND OVER

Data Set: [2007 American Community Survey 1-Year Estimates](#)

Survey: American Community Survey

**Detailed Tables – Collapsed (C) Version**

View the [noncollapsed version of this table](#).

	United States	
	Estimate	Margin of Error
Total:	280,950,438	+/-17,610
5 to 17 years:	53,237,254	+/-25,343
Speak only English	42,318,910	+/-46,666
Speak Spanish	7,872,291	+/-34,011
Speak all other languages	3,046,053	+/-36,690
18 to 64 years:	189,872,626	+/-26,305
Speak only English	150,634,696	+/-85,397
Speak Spanish	24,333,144	+/-59,411
Speak all other languages	14,904,786	+/-62,263
65 years and over:	37,840,558	+/-17,617
Speak only English	32,552,347	+/-31,473
Speak Spanish	2,341,642	+/-12,989
Speak all other languages	2,946,569	+/-21,333

**Base (B) Table**

Total:
5 to 17 years:
Speak only English
Speak Spanish
Speak other Indo-European languages
Speak Asian and Pacific Island languages
Speak other languages

Source: U.S. Census Bureau, 2007 American Community Survey

## Detailed Table

Show Geographic Identifiers  
Geo Components  
Current Selections

Use the links above to change your results

Options

Print / Download

Related Items

### B16007. AGE BY LANGUAGE SPOKEN AT HOME FOR THE POPULATION 5 YEARS AND OVER - Universe: POPULATION 5 YEARS AND OVER

	California		California Urban	California Rural
	Estimate	Margin of Error	Estimate	Estimate
Total:	33,891,325	+/-3,050	31,26	
5 to 17 years:	6,721,731	+/-3,273	6,21	
Speak only English	3,723,020	+/-21,634	3,35	
Speak Spanish	2,378,787	+/-19,423	2,26	
Speak other Indo-European languages	179,613	+/-7,653	16	
Speak Asian and Pacific Island languages	392,824	+/-11,537	37	
Speak other languages	47,487	+/-6,476	4	
18 to 64 years:	23,168,645	+/-3,815	21,38	
Speak only English	13,046,941	+/-36,606	11,77	
Speak Spanish	6,677,625	+/-29,916	6,32	
Speak other Indo-European languages	994,079	+/-21,139	93	
Speak Asian and Pacific Island languages	2,243,229	+/-18,092	2,15	
Speak other languages	206,771	+/-11,114	19	
65 years and over:	4,000,949	+/-3,352	3,66	
Speak only English	2,679,713	+/-11,401	2,40	
Speak Spanish	607,971	+/-6,667	58	

**Geographic Components**

Select a geographic type

State

Select one or more geographic components and click 'Add'.

Not a geographic component  
Urban  
Rural  
In metropolitan or micropolitan statistical area  
Not in metropolitan or micropolitan statistical area  
In metropolitan statistical area

Add Remove

==== State ====

Not a geographic component  
Urban  
Rural

OK Cancel

- Choose a table selection method

## Detailed Tables for Quality Measures

by subject

by keyword

show all tables

- Select one or more tables and click 'Add'

 [explain table numbers](#)

B98001. Unweighted Housing Unit Sample  
B98002. Unweighted Group Quarters Population Sample  
B98011. Housing Unit Coverage Rate  
B98012. Total Population Coverage Rate by Sex  
B98013. Total Population Coverage Rate by Weighting Race and Hispanic or Latino Groups  
B98014. Group Quarters Population Coverage Rate  
B98021. Housing Unit Response and Nonresponse Rates with Reasons for Noninterviews  
B98022. Group Quarters Population Response and Nonresponse Rates with Reasons for Noninterviews  
B98031. Overall Person Characteristic Imputation Rate  
B98032. Overall Housing Unit Characteristic Imputation Rate

Add ▼

# Subject Tables

- Cover particular topics such as employment, education, and origins and language
  - Provide pre-tabulated numbers and percentages
  - Often available separately by age, sex, race or ethnicity
  - Present distributions for a few key population groups with universes displayed as numeric estimates with their margins of error
  - Display measures such as medians and aggregates where appropriate and include tables of imputation rates for relevant measures
- Show more detail than the Data Profiles

Subject tables are predefined tables with frequently requested information for a single geographic area.

List tables by subject

## Age and Sex

### Subject Table List

S0101 [Age and Sex](#)

## Aging

S0102-PR Population 60 Years and Over in Puerto Rico [\(N/A\)](#)

S0102 [Population 60 Years and Over in the United States](#)

S0103-PR Population 65 Years and Over in Puerto Rico [\(N/A\)](#)

S0103 [Population 65 Years and Over in the United States](#)

## Children

S0901 [Children Characteristics](#)

S1001 [Grandchildren Characteristics](#)

S0902 [Teenagers' Characteristics](#)

## Disability

S1801 [Disability Characteristics](#)

S1802 [Selected Economic Characteristics for the Civilian Noninstitutionalized Population By Disability Status](#)

## Education

S1501 [Educational Attainment](#)

S1401 [School Enrollment](#)



## California

### S1401. School Enrollment

Data Set: 2007 American Community Survey 1-Year Estimates

Survey: American Community Survey

## Subject Table

NOTE. For information on confidentiality protection, sampling error, nonsampling error, and definitions, see [Survey Methodology](#).

Subject	Total	Margin of Error	Percent of enrolled population			
			In public school	Margin of Error	In private school	Margin of Error
<b>Population 3 years and over enrolled in school</b>	<b>10,328,045</b>	<b>+/-31,241</b>	<b>85.6%</b>	<b>+/-0.2</b>	<b>14.4%</b>	<b>+/-0.2</b>
Nursery school, preschool	589,487	+/-11,079	54.6%	+/-1.1	45.4%	+/-1.1
Kindergarten	494,741	+/-12,126	87.8%	+/-0.7	12.2%	+/-0.7
Elementary: grade 1 to grade 4	1,974,732	+/-19,115	90.3%	+/-0.5	9.7%	+/-0.5
Elementary: grade 5 to grade 8	2,084,882	+/-18,878	91.0%	+/-0.3	9.0%	+/-0.3
High school: grade 9 to grade 12	2,334,106	+/-15,602	91.9%	+/-0.3	8.1%	+/-0.3
College, undergraduate	2,408,465	+/-28,025	83.5%	+/-0.4	16.5%	+/-0.4
Graduate, professional school	441,632	+/-11,798	57.1%	+/-1.4	42.9%	+/-1.4
Percent of age group enrolled in school --						
3 and 4 years	50.0%	+/-0.9	56.1%	+/-1.2	43.9%	+/-1.2
5 to 9 years	96.7%	+/-0.2	88.8%	+/-0.4	11.2%	+/-0.4
10 to 14 years	98.7%	+/-0.1	91.0%	+/-0.3	9.0%	+/-0.3
15 to 17 years	96.7%	+/-0.3	91.7%	+/-0.4	8.3%	+/-0.4
18 and 19 years	70.7%	+/-0.7	86.8%	+/-0.6	13.2%	+/-0.6
20 to 24 years	41.2%	+/-0.5	82.5%	+/-0.7	17.5%	+/-0.7
25 to 34 years	13.3%	+/-0.3	76.7%	+/-0.9	23.3%	+/-0.9
35 years and over	3.6%	+/-0.1	75.8%	+/-0.9	24.2%	+/-0.9
<b>Population 18 years and over</b>	<b>27,169,594</b>	<b>+/-2,327</b>	<b>(X)</b>	<b>(X)</b>	<b>(X)</b>	<b>(X)</b>
Enrolled in college or graduate school	10.4%	+/-0.1	79.4%	+/-0.4	20.6%	+/-0.4

# Ranking Tables

- Provide state-level rankings of key ACS variables
  - Each table displays a single characteristic
  - States “ranked” from highest to lowest
  - Enables users to compare different states while seeing which differences are statistically significant at a 90-percent confidence level
    - Displayed by clicking on “with statistical significance” in menu on left side of screen
  - Available for 1-year estimates only

## Ranking Tables

You are here: [Main](#) ▶ [Data Sets](#) ▶ [Ranking Tables](#) ▶ [Results](#)

| [Print / Download](#) | [Related Items](#)

### View this table...

▶ [for states](#)

▶ [from 2007](#)

from [2006](#)

from [2005](#)

[with statistical significance](#)

### View...

as a [chart](#)

### Other tables...

[Select another ranking table](#)

• [Subject Definitions](#)

• [Quality Measures](#)



## United States and States

R1601. Percent of People 5 Years and Over Who Speak a Language Other Than English at Home: 2007

Universe: Population 5 years and over 

Data Set: 2007 American Community Survey 1-Year Estimates

Survey: American Community Survey, Puerto Rico Community Survey

**Ranking Table**

NOTE. For information on confidentiality protection, sampling error, nonsampling error, and definitions, see [Survey Methodology](#).

<a href="#">Rank</a> ↓	<a href="#">State</a> ↓	<a href="#">Percent</a>	<a href="#">Margin of Error</a>
1	California	42.6	+/-0.2
2	New Mexico	35.7	+/-0.7
3	Texas	33.9	+/-0.2
4	New York	28.9	+/-0.2
5	Arizona	28.5	+/-0.3
6	New Jersey	27.8	+/-0.3
7	Nevada	27.4	+/-0.5
8	Florida	26.1	+/-0.2
9	Hawaii	25.5	+/-1.0
10	Illinois	21.8	+/-0.2
11	Rhode Island	20.8	+/-0.7
12	Massachusetts	20.2	+/-0.4
	<b>United States</b>	19.7	+/-0.1
13	Connecticut	19.4	+/-0.4
14	Colorado	16.7	+/-0.4
14	Washington	16.7	+/-0.2
16	Alaska	15.9	+/-0.8
17	Maryland	14.8	+/-0.3
18	District of Columbia	14.5	+/-0.9

### View this table...

► for states

► from 2007

from [2006](#)

from [2005](#)

[without statistical significance](#)

### View...

as a [chart](#)

### Other tables...

[Select another ranking table](#)

- [Subject Definitions](#)
- [Quality Measures](#)



## United States and States

### R1601. Percent of People 5 Years and Over Who Speak a Language Other Than English at Home: 2007

Universe: Population 5 years and over 

Data Set: 2007 American Community Survey 1-Year Estimates

Survey: American Community Survey, Puerto Rico Community Survey

Select a state and click 'GO', or click a row of the table to see statistical significance.

The presence of a **\*** indicates geographies whose estimates are **not** statistically significantly different from the estimate for the selected geography. **\*\*** indicates the selected geography.

NOTE: For information on confidentiality protection, sampling error, nonsampling error, and definitions, see [Survey Methodology](#).

Rank	State	Percent	Margin of Error
1	California	42.6	+/-0.2
2	New Mexico	35.7	+/-0.7
3	Texas	33.9	+/-0.2
4	New York	28.9	+/-0.2
5	Arizona	28.5	+/-0.3
<b>6</b>	<b>** New Jersey</b>	<b>27.8</b>	<b>+/-0.3</b>
7	* Nevada	27.4	+/-0.5
8	Florida	26.1	+/-0.2
9	Hawaii	25.5	+/-1.0
10	Illinois	21.8	+/-0.2
11	Rhode Island	20.8	+/-0.7
12	Massachusetts	20.2	+/-0.4
	<b>United States</b>	19.7	+/-0.1
13	Connecticut	19.4	+/-0.4
14	Colorado	16.7	+/-0.4
14	Washington	16.7	+/-0.2
16	Alaska	15.9	+/-0.8
17	Maryland	14.8	+/-0.3
18	District of Columbia	14.5	+/-0.9

**Ranking Table**

# Geographic Comparison Tables

- Contain a small number of population or housing characteristics for a group of related geographic areas - - examples:
  - All counties in a state
  - All census tracts in a county
  - Across a variety of geographic types, such as metropolitan areas, cities and Congressional districts

## Geographic Comparison Table

| [Print](#) / [Download](#) | [Related Items](#)

### View this table...

- ▶ from 2007
- from [2006](#)
- from [2005](#)

### View this table...

[for other geographies](#)

### Other tables...

[select another table](#)

- [Subject Definitions](#)
- [Quality Measures](#)



## California -- Urban/Rural and Inside/Outside Metropolitan and Micropolitan Area

GCT1603. Percent of People 5 Years and Over Who Speak English Less Than "Very Well": 2007

Universe: Population 5 years and over ?

Data Set: 2007 American Community Survey 1-Year Estimates

Survey: American Community Survey

NOTE. For information on confidentiality protection, sampling error, nonsampling error, and definitions, see [Survey Methodology](#).

Geographic area	Percent	Margin of Error
<b>California</b>	20.0	+/-0.1
<b>URBAN AND RURAL</b>		
Urban	20.7	+/-0.2
Rural	10.5	+/-0.4
<b>INSIDE AND OUTSIDE METROPOLITAN AND MICROPOLITAN STATISTICAL AREA</b>		
In metropolitan or micropolitan statistical area	20.1	+/-0.1
In metropolitan statistical area	20.3	+/-0.1
In principal city	23.0	+/-0.2
Not in principal city	17.7	+/-0.2
In micropolitan statistical area	5.1	+/-0.6
In principal city	5.0	+/-1.6
Not in principal city	5.1	+/-0.6
Not in metropolitan or micropolitan statistical area	6.5	+/-0.9

Source: U.S. Census Bureau, 2007 American Community Survey

# Thematic Maps

- Graphic displays of data available through the Geographic Comparison Tables and the Ranking Tables
- Different shades of color used to display variations in the data
  - Lighter shades indicate lower values and darker shades, higher values
- Users can highlight areas with statistically different values from a selected state, county, metropolitan area, or Congressional district of interest

### Change...

- [Data Classes](#)
- [Boundaries and features](#)

### Reposition on...

- [A street address or ZIP code](#)
- [A latitude and longitude](#)
- [The selected geography](#)

### View...

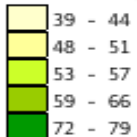
- [as a table](#)
- [without statistical significance](#)

[Quick tips](#)

### Legend

#### Data Classes

Women/1,000 Women



#### Statistical Significance

- Selected Geography
- Not Different

#### Features

- Major Road
- Street
- Stream/Waterbody

Items in gray text are not visible at this zoom level



## M1303. Women 15 to 50 Years Old Who Had a Birth in the Past 12 Months (Per 1,000 Women): 2007 ?

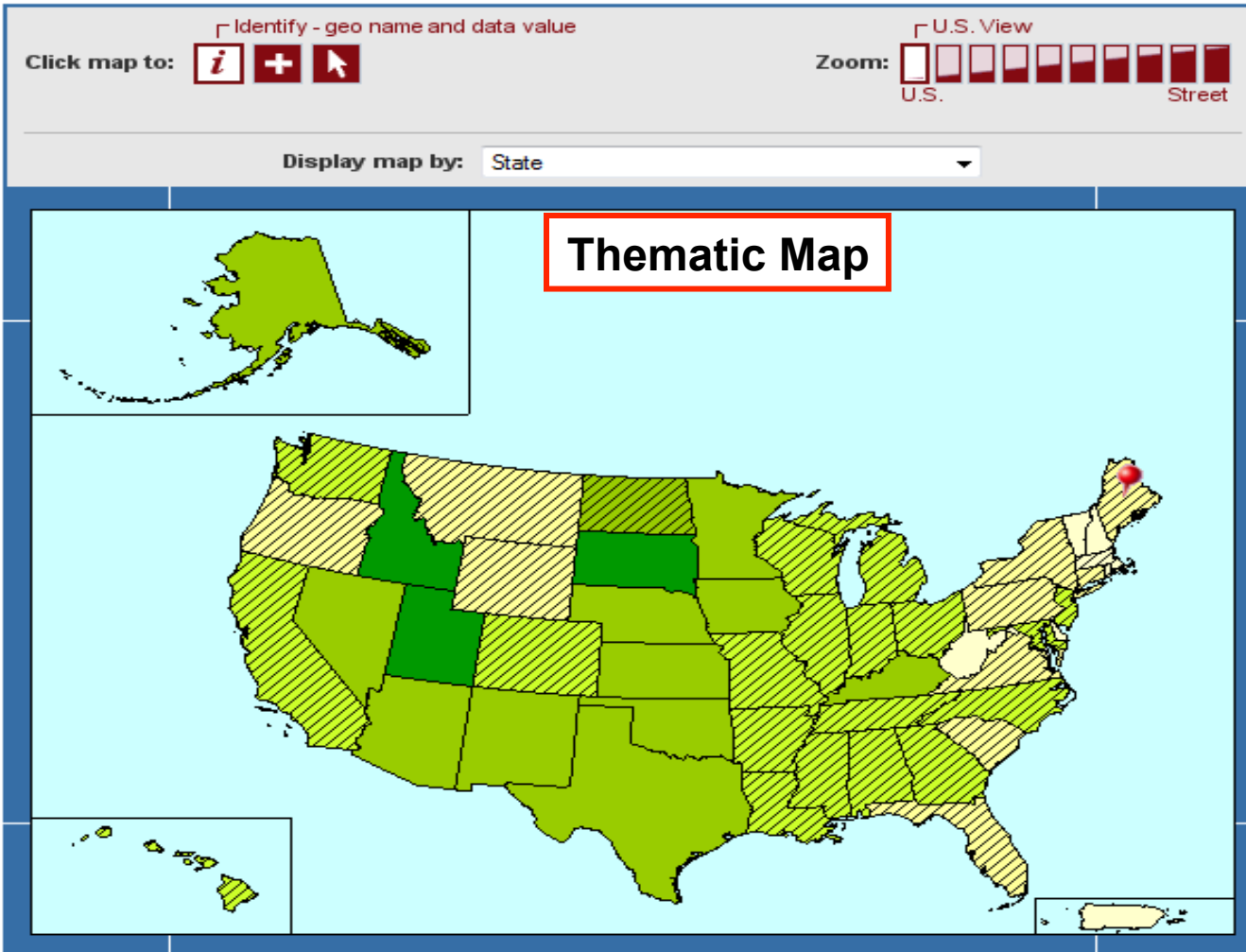
Universe: Women 15 to 50 years old

Data Set: 2007 American Community Survey 1-Year Estimates

Survey: American Community Survey, Puerto Rico Community Survey

**United States by State - Statistical Significance View for Maine**

NOTE: For information on confidentiality protection, sampling error, nonsampling error, and definitions, see [Survey Methodology](#).



#### Selected Geography: Maine

Estimate: 51 Women/1,000 Women, Margin of Error: +/-7 Women/1,000 Women

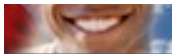
The presence of a hatched pattern indicates geographies whose estimates are not statistically significantly different from the estimate for the selected geography.

Source: U.S. Census Bureau, 2007 American Community Survey



# PUMS

- PUMS = Public Use Microdata Sample
- Includes a sample of untabulated records for individuals and housing units
- Provides access to custom tables that are not available through pre-tabulated ACS products
- Requires users to download data and analyze with statistical software, or access through DataFerrett
- Data users must calculate standard errors



## ACS Public Use Microdata Sample (PUMS) 2007 1-Year

You are here: [Main](#) ▶ [Data Sets](#) ▶ [ACS PUMS 2007 1-Year](#)

### PUMS Data and Documentation:

#### ▶ 2007 1-Yr

[2006](#)[2005](#)[2004](#)[2003](#)[2002](#)[2001](#)[2000](#)

The Public Use Microdata Sample files, or PUMS, are a sample of the actual responses to the American Community Survey and include most [population and housing characteristics](#). These files provide users with the flexibility to prepare customized tabulations and can be used for detailed research and analysis. Files have been edited to protect the confidentiality of all individuals and of all individual households. For an overview of the file, please see the [American Community Survey PUMS overview](#).

The 2007 PUMS files include the total population including those living in institutions, college dormitories, and other group quarter facilities. The smallest geographic unit that is identified is the Public Use Microdata Area (PUMA).

In conjunction with the release of three-year estimates, a multiyear PUMS file will be released in late 2008. The multiyear PUMS file will contain the same sample of actual responses provided in the 2005, 2006, and 2007 One-Year PUMS files.

### Download 2007 1-Year PUMS Data

■ Select a data type, data format, and state. Click 'GO'.

#### Data Type

- Population Records  
 Housing Records

#### Data Format

- CSV (comma separated values)  
 PC SAS Data Set  
 UNIX SAS Data Set

#### State

United States

### Documentation

- [Subjects available in PUMS files](#)
- [2007 PUMS top coded values](#)
- 2007 PUMS Code Lists
  - [Ancestry](#)
  - Geographic Equivalency Files:
    - [One-Percent PUMA](#)
    - [Five-Percent PUMA](#)
  - [Group Quarters](#)
  - [Hispanic Origin](#)
  - [Industry](#)
  - [Language](#)
  - [Migration](#)
  - [Migration PUMA](#)
  - [Occupation](#)
  - [Place of Birth](#)
  - [Place of Work](#)
  - [Place of Work PUMA](#)
  - [Race 1 \(9 categories\)](#)
  - [Race 2 \(67 categories\)](#)
  - [Race 3 \(72 categories\)](#)
  - [State Code List](#)

**Public Use Microdata Sample (PUMS)**



**Thank you!**

Linda Clark  
Information Services Specialist  
[linda.clark@census.gov](mailto:linda.clark@census.gov)  
425-908-3060

Seattle Regional Census Center  
Partnership & Data Services  
19820 North Creek Parkway  
Bothell, WA 98011